



MERIDIAN HOMES

Concierge Level Service for Every Client

**6007 Henning Street
Bethesda, Maryland 20817**





6007 Henning Street, Bethesda

5,237-square-foot farmhouse-style with 5 bedrooms, 4.5 baths

Location, Location, Location

This wonderful 7,500-square-foot lot is in the heart of Ayr lawn, one of Bethesda's most popular neighborhoods. The finished home will be surrounded by trees, but sited so that the main living spaces – gourmet kitchen, breakfast area and family room – as well as the flagstone patio and spacious backyard, will bask in sunlight.

6007 Henning Street is near Downtown Bethesda, Montgomery Mall and Wildwood Shopping Center.

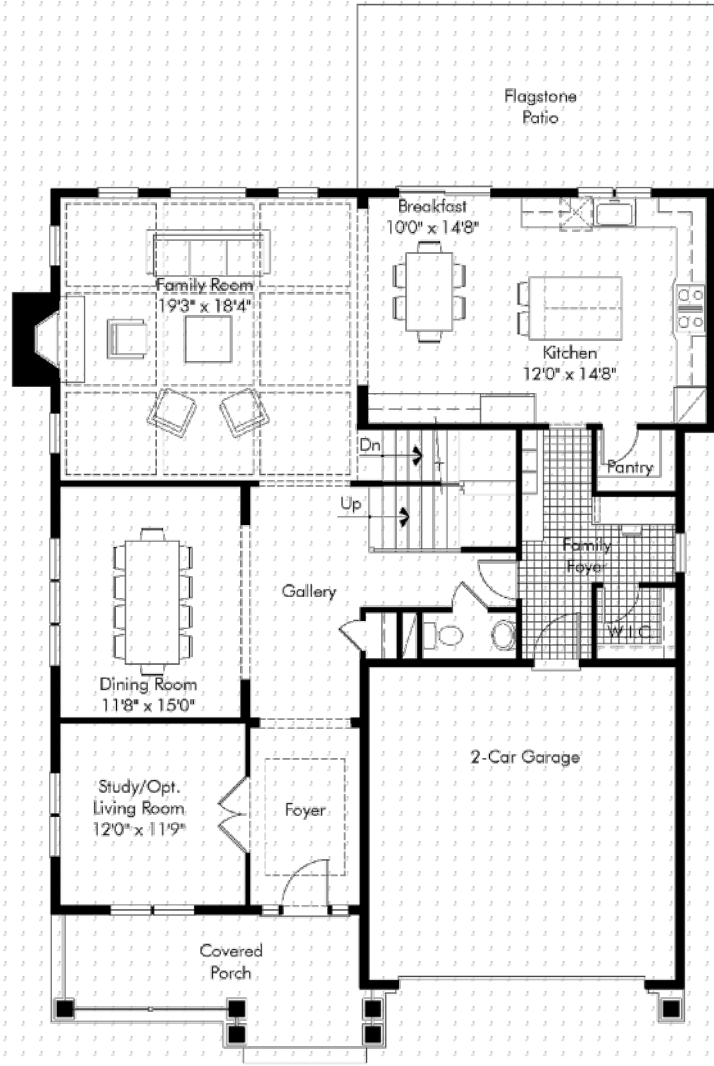
6007 Henning Street, Bethesda

Construction Status

Construction will begin this summer. Thanks to that schedule, at this time you still have the opportunity to add personal touches to this home.

Architectural Detail

The gabled façade, front porch and other design touches perfectly capture the farmhouse esthetic. Inside, the rooms will have 9-foot ceilings and will feature custom millwork, hardwood floors, and many other exceptional details. With gracious spaces on all three levels, this home is ideal for the varied activities that 21st Century families enjoy.

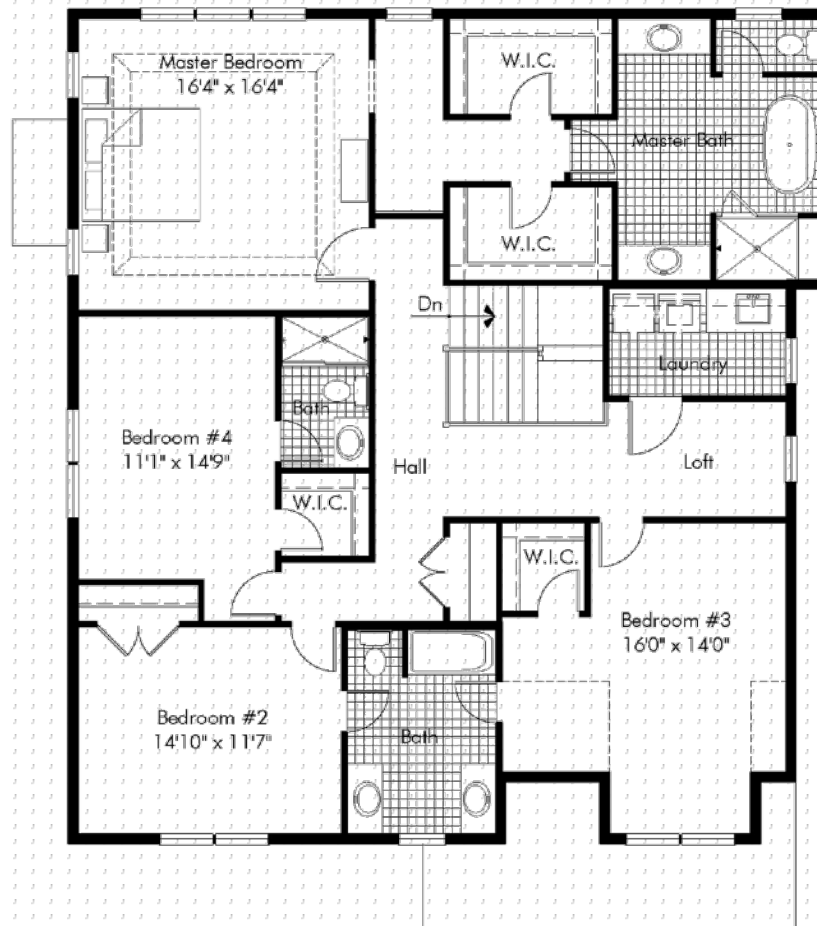


Main Level Plan

NOTE: Plan dimensions, features, materials and specifications are subject to change, or substitution without prior notice due to actual building conditions or ongoing design improvements.

Main Level Luxury Features Include...

- ◎ **Gourmet Kitchen** – the sought-after center-island layout with breakfast area features custom hardwood cabinetry with granite counters, stainless-steel appliances and the essential walk-in pantry
- ◎ **Flagstone Patio** – lush landscaping surrounds this outdoor retreat that's perfect for entertaining
- ◎ **Family Room** – free-flowing open-concept space with a coffered ceiling and a gas fireplace
- ◎ **Dining Room** – the feast-sized dining room features a wonderful chandelier and tons of natural light
- ◎ **Formal Living Room/Study**– flexible space designed to handle everyday life and entertaining
- ◎ **Main Level Gallery** – the high-traffic core of the home handles the flow with a family foyer/mudroom, powder room, large walk-in closet, home-management center with desk and access to the oversized two-car garage

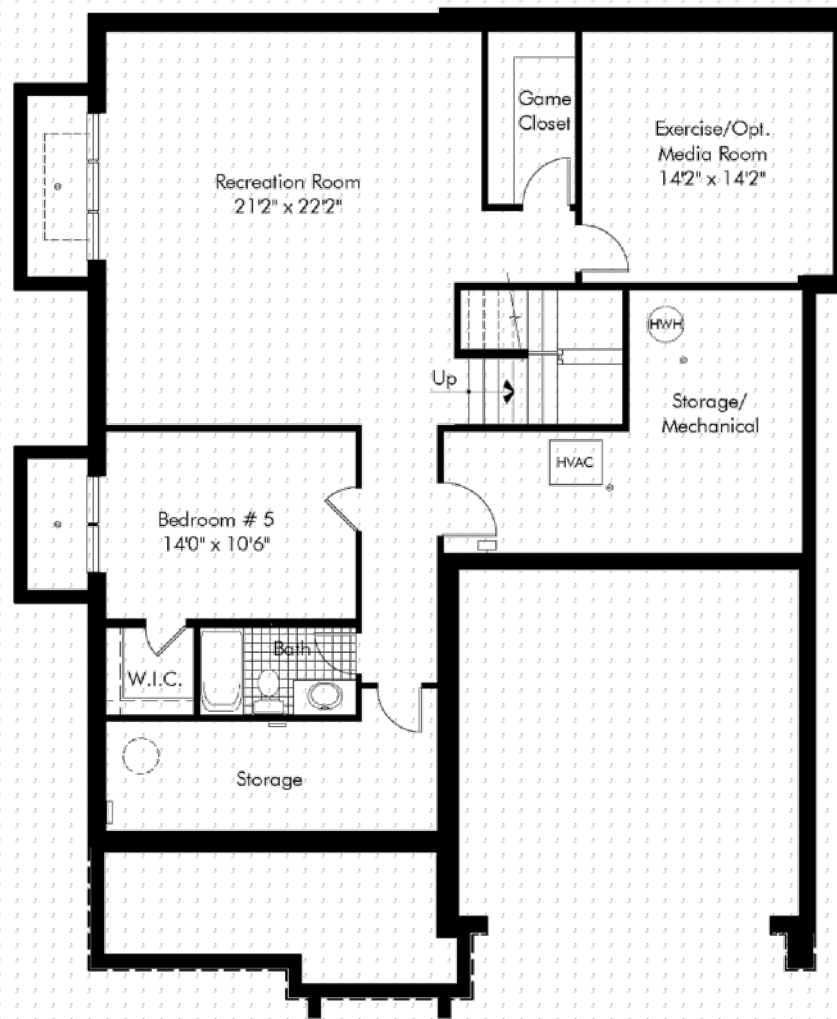


Upper Level Plan

NOTE: Plan dimensions, features, materials and specifications are subject to change, or substitution without prior notice due to actual building conditions or ongoing design improvements.

Upper Level Luxury Features Include...

- ◎ **Master Suite** – for real luxury the suite offers tray ceilings, his-and-hers walk-in closets and a dressing vestibule
- ◎ **Spa-Style Master Bath** – a sculptural freestanding soaking tub is matched by an oversized shower, dual vanities and wonderful marble and stone surfaces everywhere
- ◎ **3 Additional Bedrooms and 2 Full Bathrooms**- space to accommodate every member of your family
- ◎ **Bedroom-Level Laundry Area**– conveniently located and highly functional
- ◎ **Loft Area** – a bonus room easily adaptable to a play space, TV watching or office use

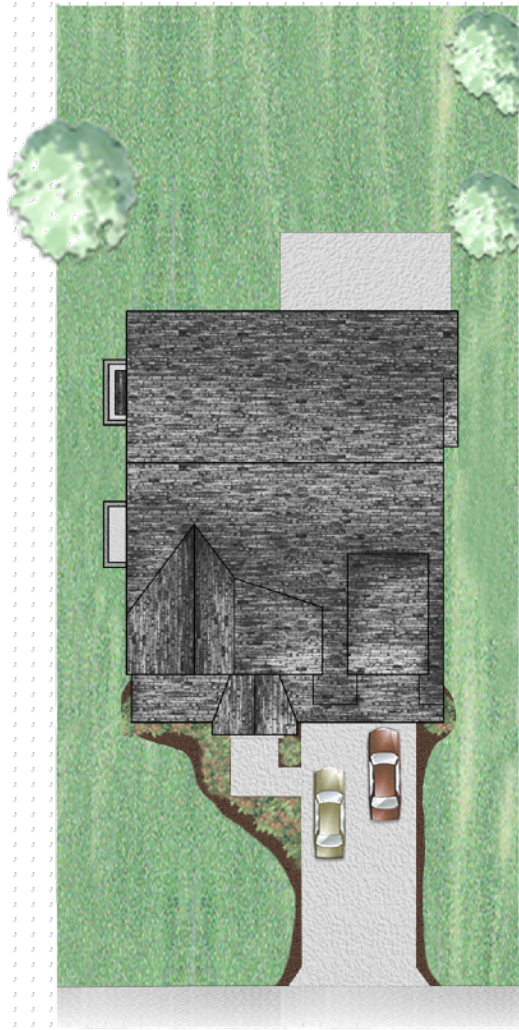
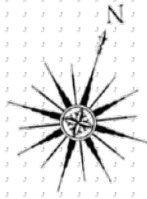


Lower Level Plan

NOTE: Plan dimensions, features, materials and specifications are subject to change, or substitution without prior notice due to actual building conditions or ongoing design improvements.

Lower Level Luxury Features Include...

- ◎ **Recreation Room** – sprawling space with natural light from 3 full-size windows, ideal for game tables and a computer/play center
- ◎ **Guest/Au Pair Suite** – with light from 2 full-size windows, a walk-in closet and a full bath
- ◎ **Gym/Media Room** – a walk-in game closet and a large storage room complete the lower level



6007 HENNING STREET

BETHESDA, MARYLAND, 20817

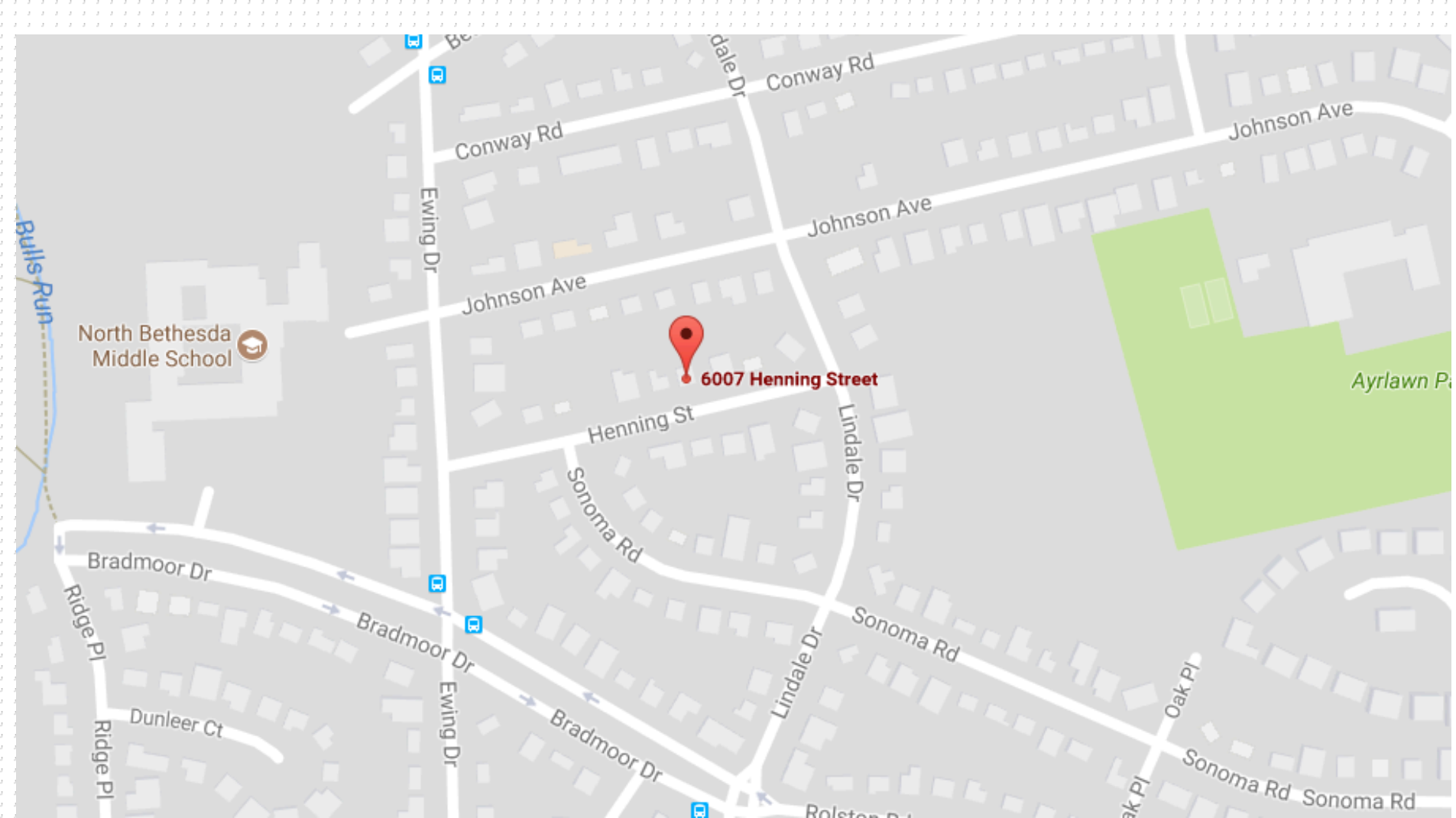
Lot Size 7,500 sq. ft.

Note: All plans are approximate, subject to change, and are the artist's conception only.

MONTGOMERY COUNTY PUBLIC SCHOOL ASSIGNMENTS

- ⦿ [Wyngate Elementary School](#)
- ⦿ [North Bethesda Middle School](#)
- ⦿ [Walter Johnson High School](#)

For verification of any school assignment, please call
Montgomery County Public Schools at 240.314.4710



[CLICK HERE TO VIEW LARGER MAP](#)



MERIDIAN HOMES

Concierge Level Service for Every Client

www.meridianhomesinc.com

For more information

Contact us by calling

301.652.4440

or Email

info@meridianhomesinc.com

