



MERIDIAN HOMES

Concierge Level Service for Every Client

We Are Proud To Present:

**10006 Broad Street
Bethesda, Maryland 20814**





10006

10006 Broad Street Bethesda, Maryland 20814

Arts & Crafts-style home with 5 bedrooms, 4.5 baths and 5,434-square-feet of living space

Available Now

Construction is complete and this lovely home is now available. [Contact us](#) today for more details.

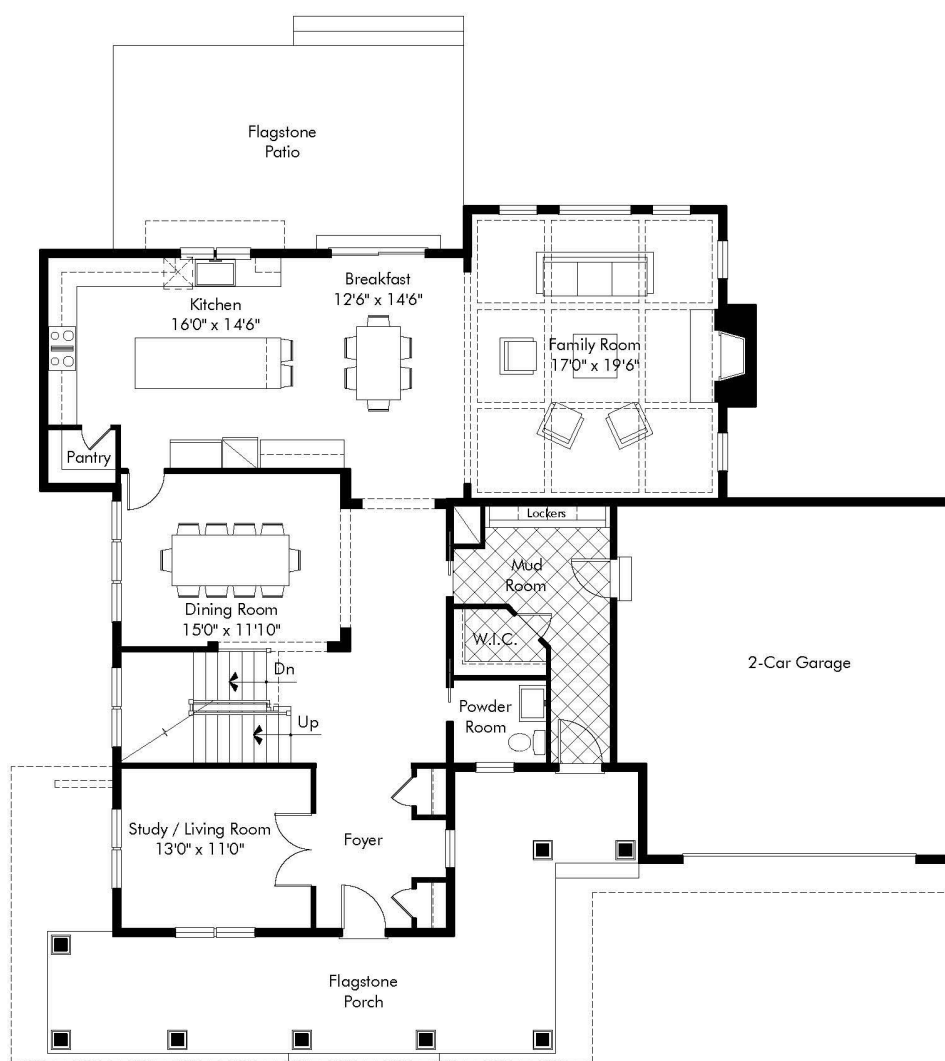
Architectural Detail

Every detail of this home — the modern-day Arts & Crafts facade, the charming front porch, the gabled rooftop, the 9-foot ceilings, the custom millwork — is breathtaking. The flowing three-level layout is exceptionally well-designed to accommodate a contemporary family's lifestyle.

10006 Broad Street Bethesda, Maryland 20814

Location, Location, Location

10006 Broad Street is located in the sought-after Wildwood Manor neighborhood of Bethesda. The tree-lined, gently sloping lot is 9,627 square-feet, and the backyard features a large flagstone patio. Downtown Bethesda, the Wildwood Shopping Center, Beltway access and great schools are all nearby.



Main Level Plan

NOTE: Plan dimensions, features, materials and specifications are subject to change, or substitution without prior notice due to actual building conditions or ongoing design improvements.

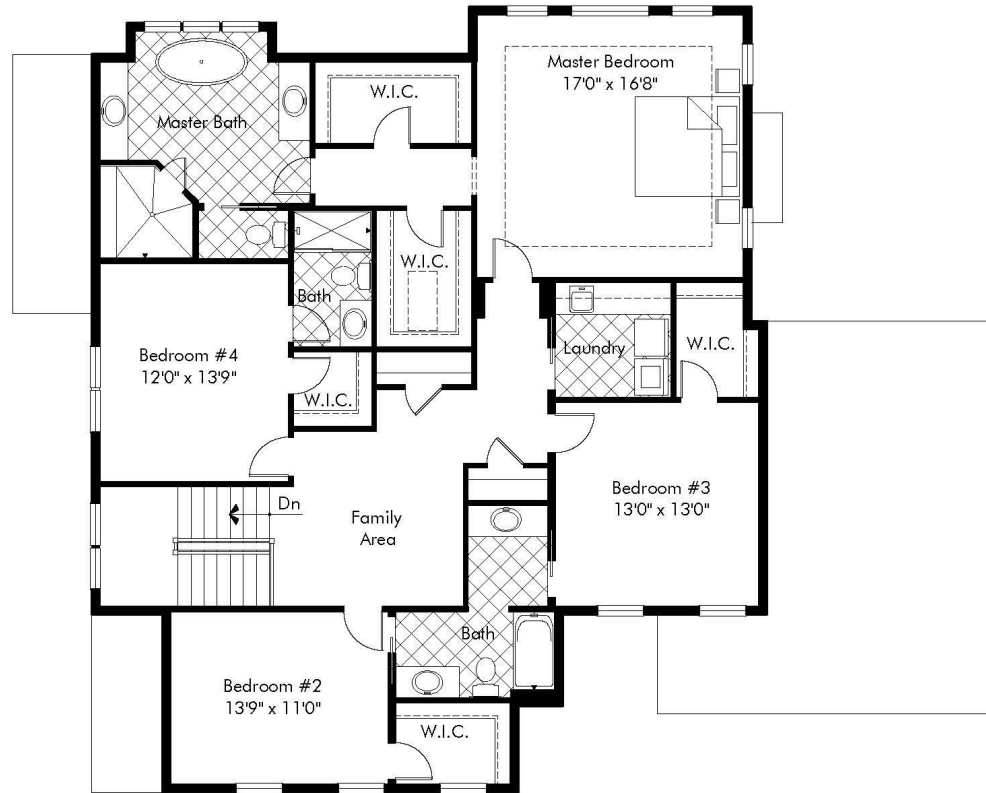
Main Level Luxury Features Include...

- ◎ **Gourmet Kitchen** – the sought-after center-island layout with breakfast area features custom hardwood cabinetry with granite counters, commercial-style stainless-steel appliances and the essential walk-in pantry
 - ◎ **Flagstone Patio** – lush landscaping surrounds this outdoor retreat that's perfect for entertaining
 - ◎ **Family Room** – free-flowing open-concept space with a coffered ceiling and a gas fireplace
 - ◎ **Dining Room** – the feast-sized dining room features a wonderful chandelier and tons of natural light
 - ◎ **Formal Living Room/Study** – flexible space designed to handle everyday life and entertaining
 - ◎ **Formal Foyer** – the gracious entryway features two coat closets and lovely wainscoting
 - ◎ **Family Foyer/Mudroom** – this high-traffic area of the home handles the flow with access to the oversized two-car garage and front porch; a large walk-in closet and custom built-in lockers provide plenty of storage and keep the family organized
- 










Upper Level Plan

NOTE: Plan dimensions, features, materials and specifications are subject to change, or substitution without prior notice due to actual building conditions or ongoing design improvements.

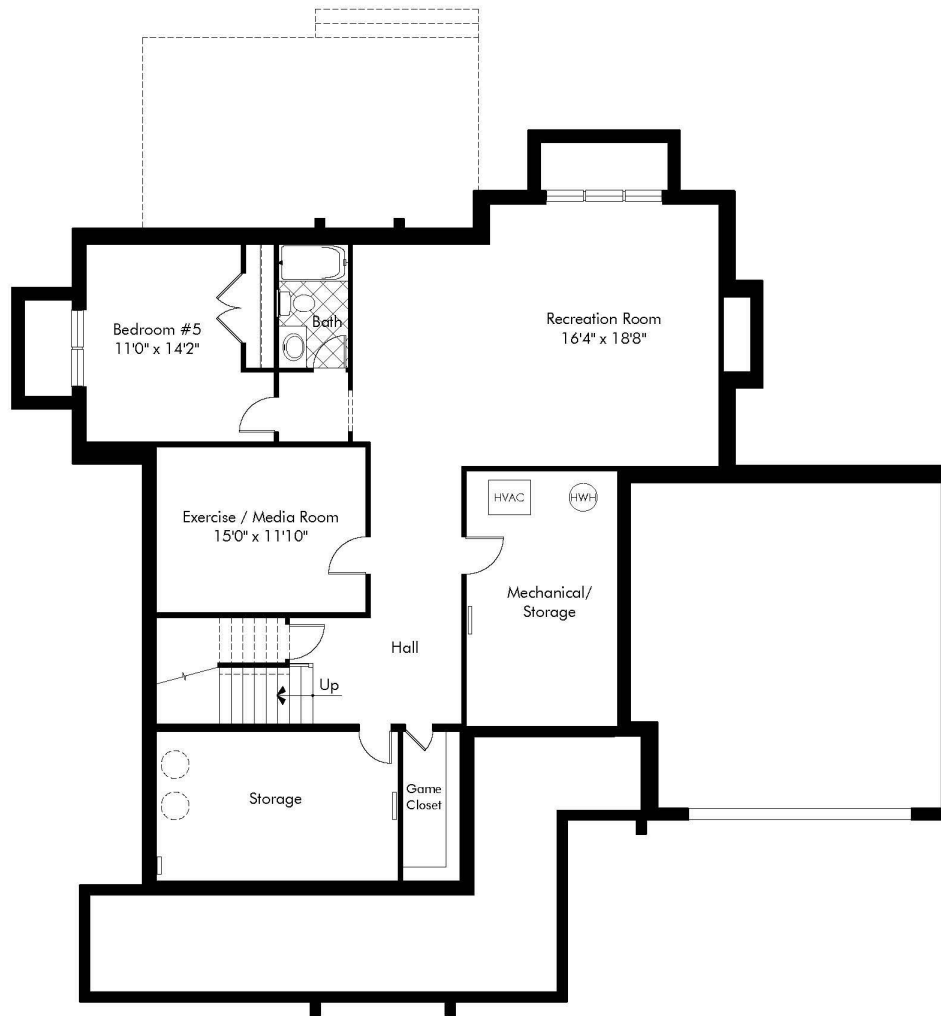
Upper Level Luxury Features Include...

- ⦿ **Master Suite** – the luxurious, expansive master suite offers a tray ceiling, his-and-hers walk-in closets and a dressing vestibule
 - ⦿ **Spa-Style Master Bath** – a sculptural freestanding soaking tub is matched by an oversized shower, dual vanities and wonderful natural marble and stone surfaces everywhere
 - ⦿ **3 Additional Bedrooms and 2 Full Bathrooms**- space to accommodate every member of your family
 - ⦿ **Bedroom-Level Laundry Area**– conveniently located and highly functional
 - ⦿ **Loft Area** – a bonus room easily adaptable to a play space, TV watching or office use
- 










Lower Level Plan

NOTE: Plan dimensions, features, materials and specifications are subject to change, or substitution without prior notice due to actual building conditions or ongoing design improvements.

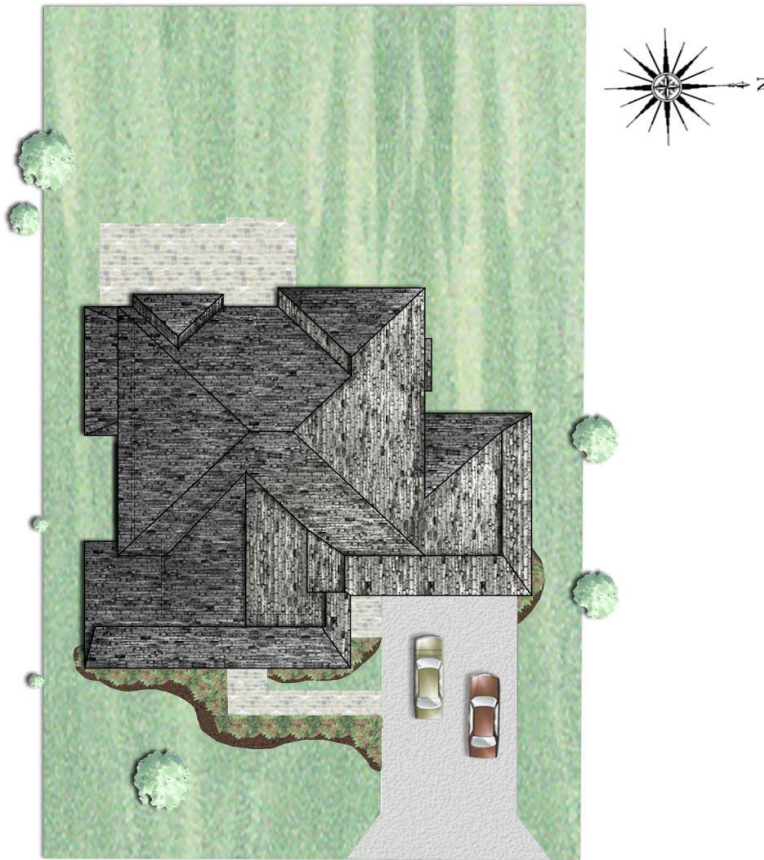
Lower Level Luxury Features Include...

- ◎ **Recreation Room** – the sprawling space with natural light from 3 full-size windows is ideal for game tables and a computer/play center
 - ◎ **Guest/Au Pair Suite** – with light from 2 full-size windows, a walk-in closet and a full bathroom
 - ◎ **Gym/Media Room** – use this space for your family's needs
 - ◎ **Game Closet and Storage Room** – a walk-in game closet and a large storage room complete the lower level
- 









10006 BROAD STREET

BETHESDA MARYLAND 20814


Lot Size 9,627 sq. ft.

Note: All plans are approximate, subject to change, and are the artist's conception only.

MONTGOMERY COUNTY PUBLIC SCHOOL ASSIGNMENTS

- ⦿ [Ashburton Elementary School](#)
- ⦿ [North Bethesda Middle School](#)
- ⦿ [Walter Johnson High School](#)

For verification of any school assignment, please call
Montgomery County Public Schools at
240-740-3000





[CLICK HERE TO VIEW LARGER MAP](#)



MERIDIAN HOMES

Concierge Level Service for Every Client

www.meridianhomesinc.com

For more information
contact us by calling
301.652.4440
or email

info@meridianhomesinc.com

