



MERIDIAN HOMES

Concierge Level Service for Every Client

We Are Proud To Present:

**10006 Broad Street
Bethesda, Maryland 20814**





10006

10006 Broad Street Bethesda, Maryland 20814


Arts & Crafts-style home with 5 bedrooms, 4.5 baths and 5,434-square-feet of living space

SOLD!

This exquisite new home has been sold. To learn more about our upcoming new home projects that are in the design and planning stages, get in touch with us today by completing the [Contact us](#) form.

Architectural Detail


Every detail of this home — the modern-day Arts & Crafts facade, the charming front porch, the gabled rooftop, the 9-foot ceilings, the custom millwork — is breathtaking. The flowing three-level layout is exceptionally well-designed to accommodate a contemporary family's lifestyle.

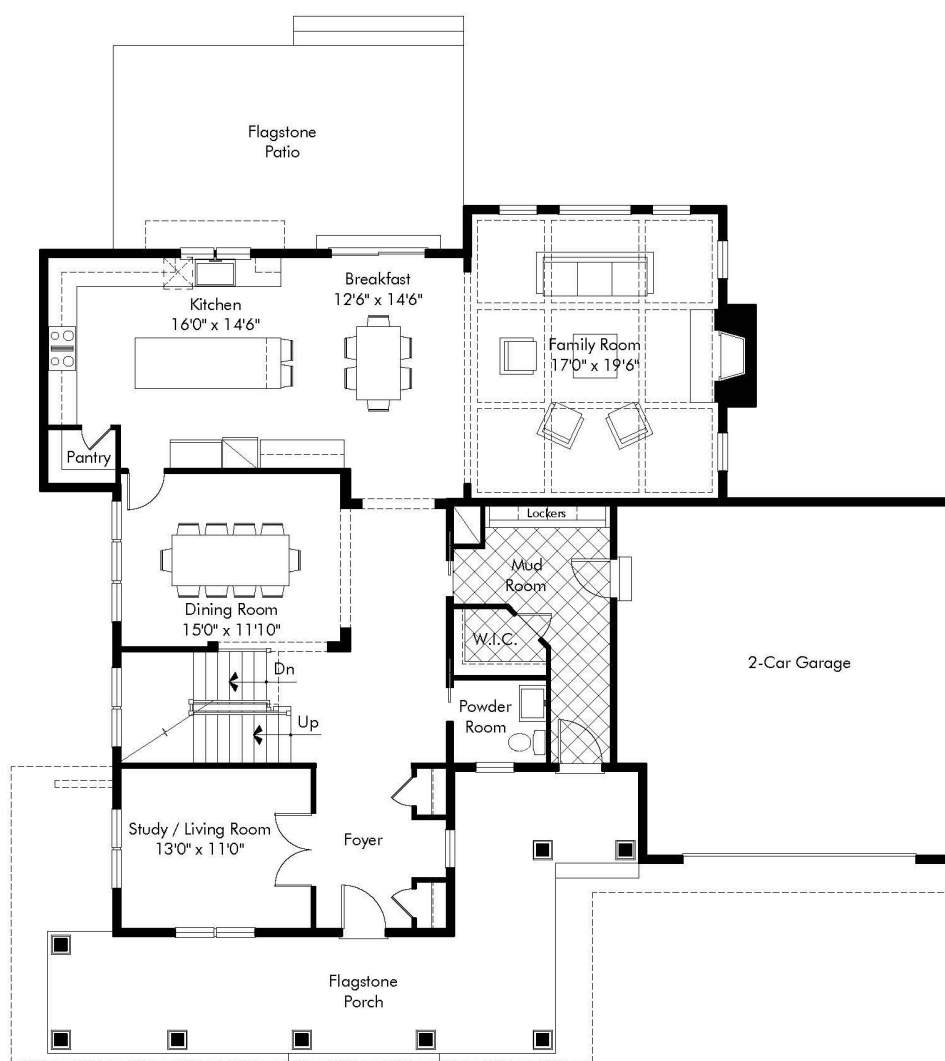


10006 Broad Street Bethesda, Maryland 20814

Location, Location, Location

10006 Broad Street is located in the sought-after Wildwood Manor neighborhood of Bethesda. The tree-lined, gently sloping lot is 9,627 square-feet, and the backyard features a large flagstone patio. Downtown Bethesda, the Wildwood Shopping Center, Beltway access and great schools are all nearby.





Main Level Plan

NOTE: Plan dimensions, features, materials and specifications are subject to change, or substitution without prior notice due to actual building conditions or ongoing design improvements.

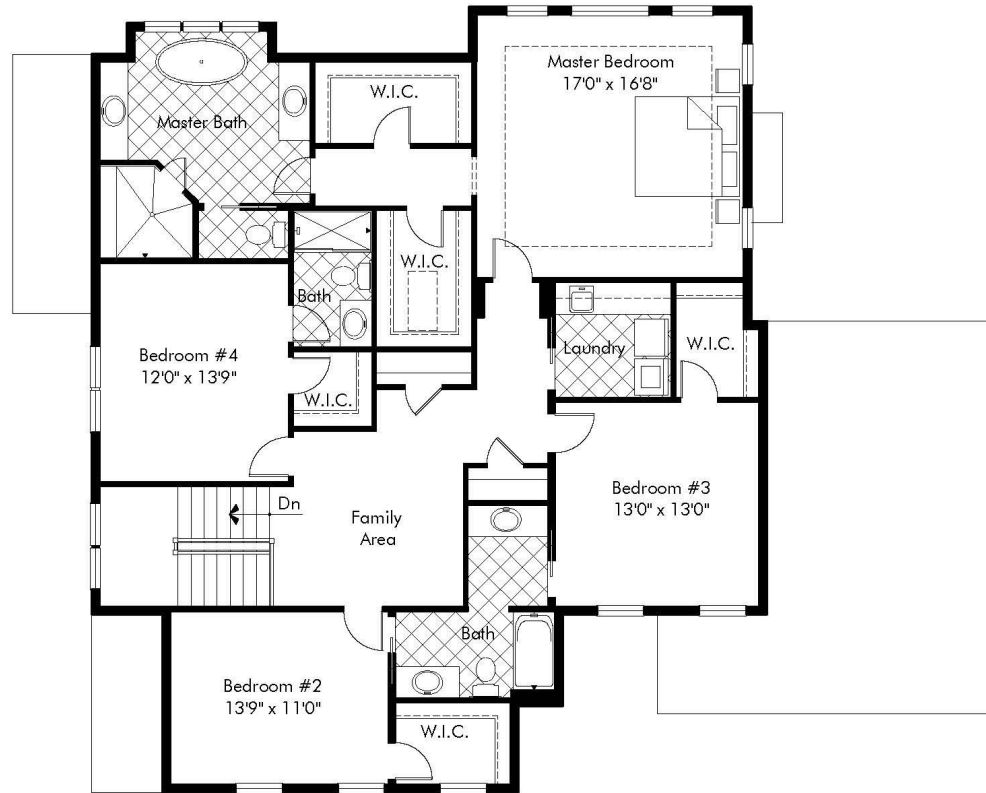
Main Level Luxury Features Include...

- ◎ **Gourmet Kitchen** – the sought-after center-island layout with breakfast area features custom hardwood cabinetry with granite counters, commercial-style stainless-steel appliances and the essential walk-in pantry
 - ◎ **Flagstone Patio** – lush landscaping surrounds this outdoor retreat that's perfect for entertaining
 - ◎ **Family Room** – free-flowing open-concept space with a coffered ceiling and a gas fireplace
 - ◎ **Dining Room** – the feast-sized dining room features a wonderful chandelier and tons of natural light
 - ◎ **Formal Living Room/Study** – flexible space designed to handle everyday life and entertaining
 - ◎ **Formal Foyer** – the gracious entryway features two coat closets and lovely wainscoting
 - ◎ **Family Foyer/Mudroom** – this high-traffic area of the home handles the flow with access to the oversized two-car garage and front porch; a large walk-in closet and custom built-in lockers provide plenty of storage and keep the family organized
- 










Upper Level Plan

NOTE: Plan dimensions, features, materials and specifications are subject to change, or substitution without prior notice due to actual building conditions or ongoing design improvements.

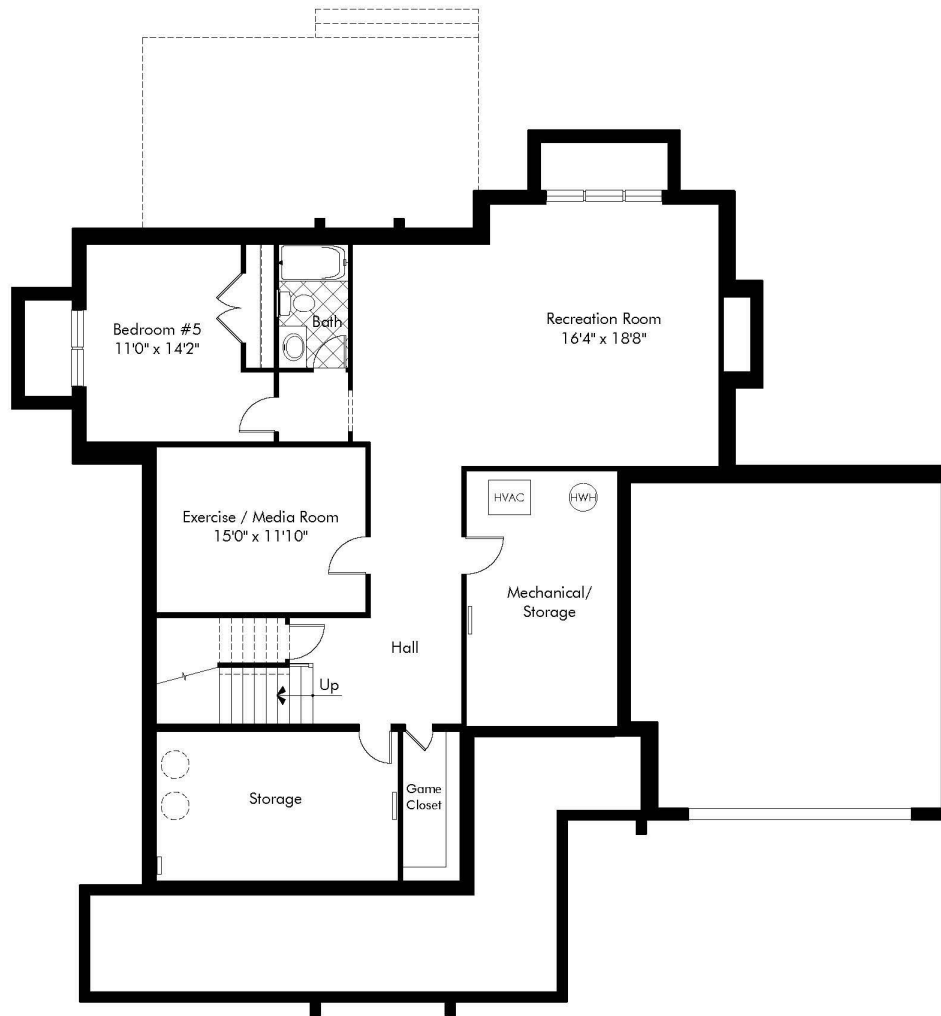
Upper Level Luxury Features Include...

- ⦿ **Master Suite** – the luxurious, expansive master suite offers a tray ceiling, his-and-hers walk-in closets and a dressing vestibule
 - ⦿ **Spa-Style Master Bath** – a sculptural freestanding soaking tub is matched by an oversized shower, dual vanities and wonderful natural marble and stone surfaces everywhere
 - ⦿ **3 Additional Bedrooms and 2 Full Bathrooms**- space to accommodate every member of your family
 - ⦿ **Bedroom-Level Laundry Area**– conveniently located and highly functional
 - ⦿ **Loft Area** – a bonus room easily adaptable to a play space, TV watching or office use
- 










Lower Level Plan

NOTE: Plan dimensions, features, materials and specifications are subject to change, or substitution without prior notice due to actual building conditions or ongoing design improvements.

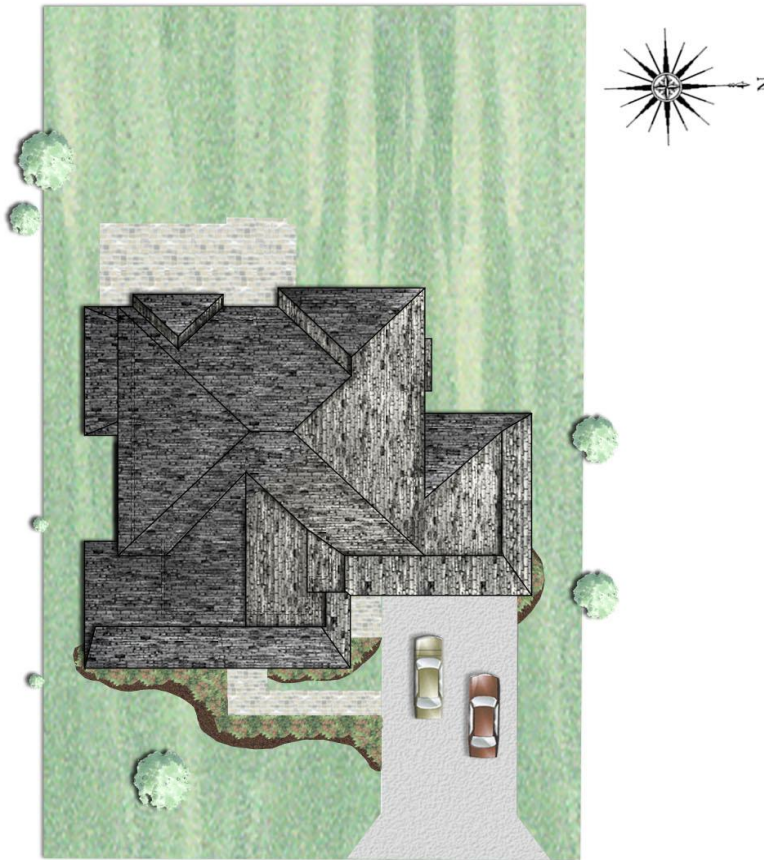
Lower Level Luxury Features Include...

- ◎ **Recreation Room** – the sprawling space with natural light from 3 full-size windows is ideal for game tables and a computer/play center
 - ◎ **Guest/Au Pair Suite** – with light from 2 full-size windows, a walk-in closet and a full bathroom
 - ◎ **Gym/Media Room** – use this space for your family's needs
 - ◎ **Game Closet and Storage Room** – a walk-in game closet and a large storage room complete the lower level
- 









10006 BROAD STREET

BETHESDA MARYLAND 20814

Lot Size 9,627 sq. ft.

Note: All plans are approximate, subject to change, and are the artist's conception only.

MONTGOMERY COUNTY PUBLIC SCHOOL ASSIGNMENTS

- ⦿ [Ashburton Elementary School](#)
- ⦿ [North Bethesda Middle School](#)
- ⦿ [Walter Johnson High School](#)

For verification of any school assignment, please call
Montgomery County Public Schools at
240-740-3000



[CLICK HERE TO VIEW LARGER MAP](#)



MERIDIAN HOMES

Concierge Level Service for Every Client

www.meridianhomesinc.com

For more information
contact us by calling
301.652.4440
or email

info@meridianhomesinc.com

