



**We Are Proud To Present:**

**10006 Broad Street  
Bethesda, Maryland 20814**



# **10006 Broad Street Bethesda, Maryland 20814**

**5,434-square-foot, Arts & Crafts-style home with 5 bedrooms, 4.5 baths**

## **Location, Location, Location**

10006 Broad Street is located in the sought-after Wildwood Manor neighborhood of Bethesda. The tree-lined, gently sloping lot is 9,627 square-feet, and the backyard features a large flagstone patio. Downtown Bethesda, the Wildwood Shopping Center, Beltway access and great schools are all nearby.




# 10006 Broad Street Bethesda, Maryland 20814

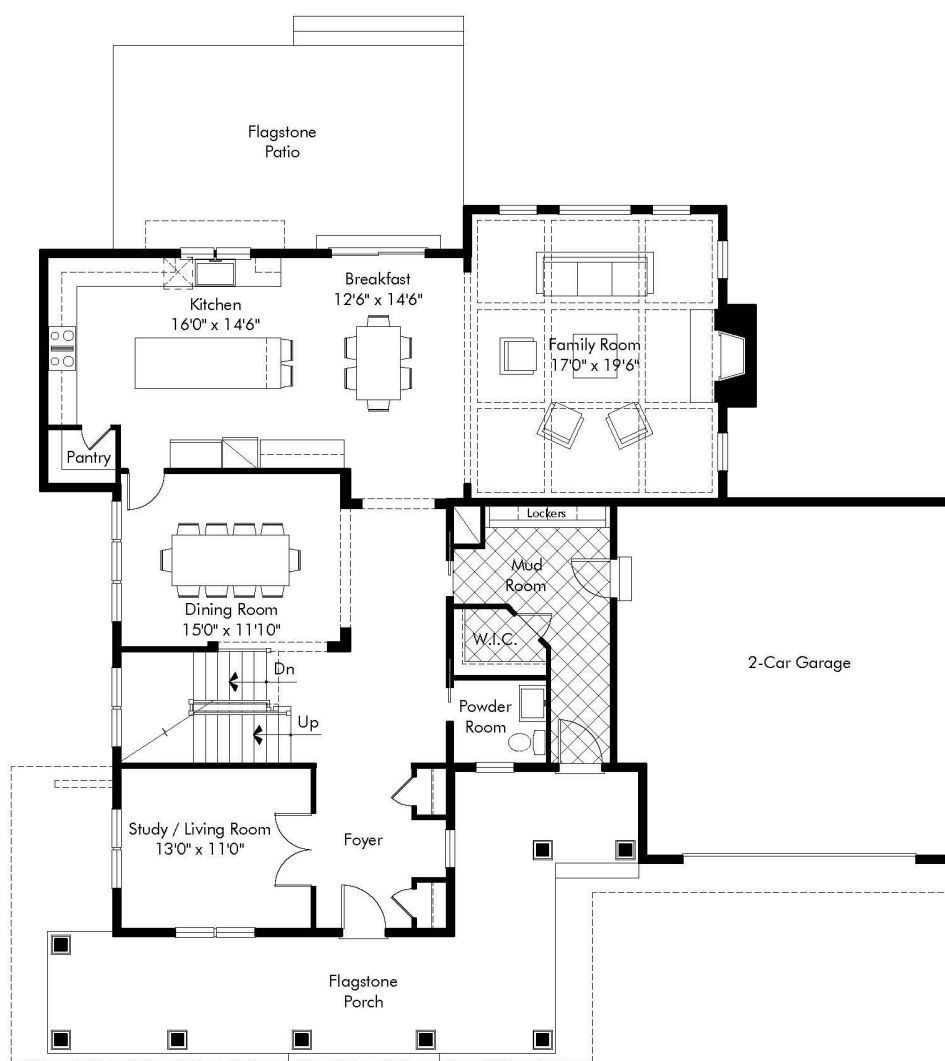
## Construction Status

Construction is underway and will be complete in the summer of 2019. So, for a limited period of time, you can customize some finishes in this fabulous new home. [Contact us](#) today for more details.

## Architectural Detail

Every detail of this home — the modern-day Arts & Crafts facade, the charming front porch, the gabled rooftop, the 9-foot ceilings, the custom millwork — is breathtaking. The flowing three-level layout is exceptionally well-designed to accommodate a contemporary family's lifestyle.



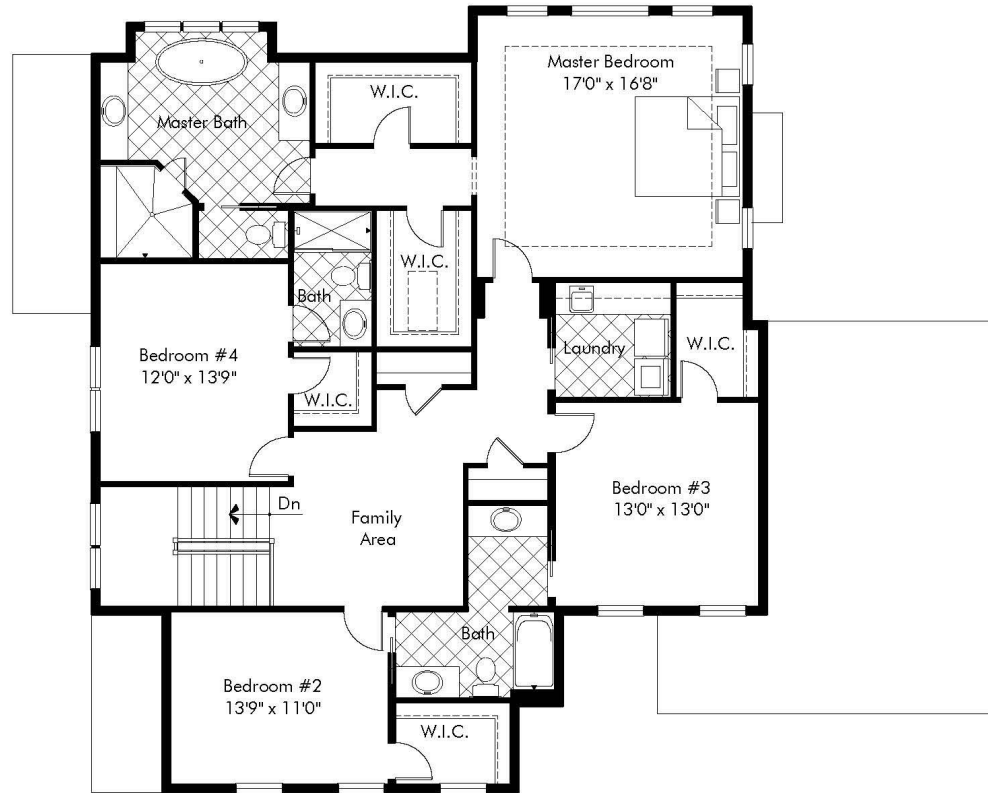


## Main Level Plan

NOTE: Plan dimensions, features, materials and specifications are subject to change, or substitution without prior notice due to actual building conditions or ongoing design improvements.

# Main Level Luxury Features Include...


- ◎ **Gourmet Kitchen** – the sought-after center-island layout with breakfast area features custom hardwood cabinetry with granite counters, commercial-style stainless-steel appliances and the essential walk-in pantry
  - ◎ **Flagstone Patio** – lush landscaping surrounds this outdoor retreat that's perfect for entertaining
  - ◎ **Family Room** – free-flowing open-concept space with a coffered ceiling and a gas fireplace
  - ◎ **Dining Room** – the feast-sized dining room features a wonderful chandelier and tons of natural light
  - ◎ **Formal Living Room/Study** – flexible space designed to handle everyday life and entertaining
  - ◎ **Formal Foyer** – the gracious entryway features two coat closets and lovely wainscoting
  - ◎ **Family Foyer/Mudroom** – this high-traffic area of the home handles the flow with access to the oversized two-car garage and front porch; a large walk-in closet and custom built-in lockers provide plenty of storage and keep the family organized
- 

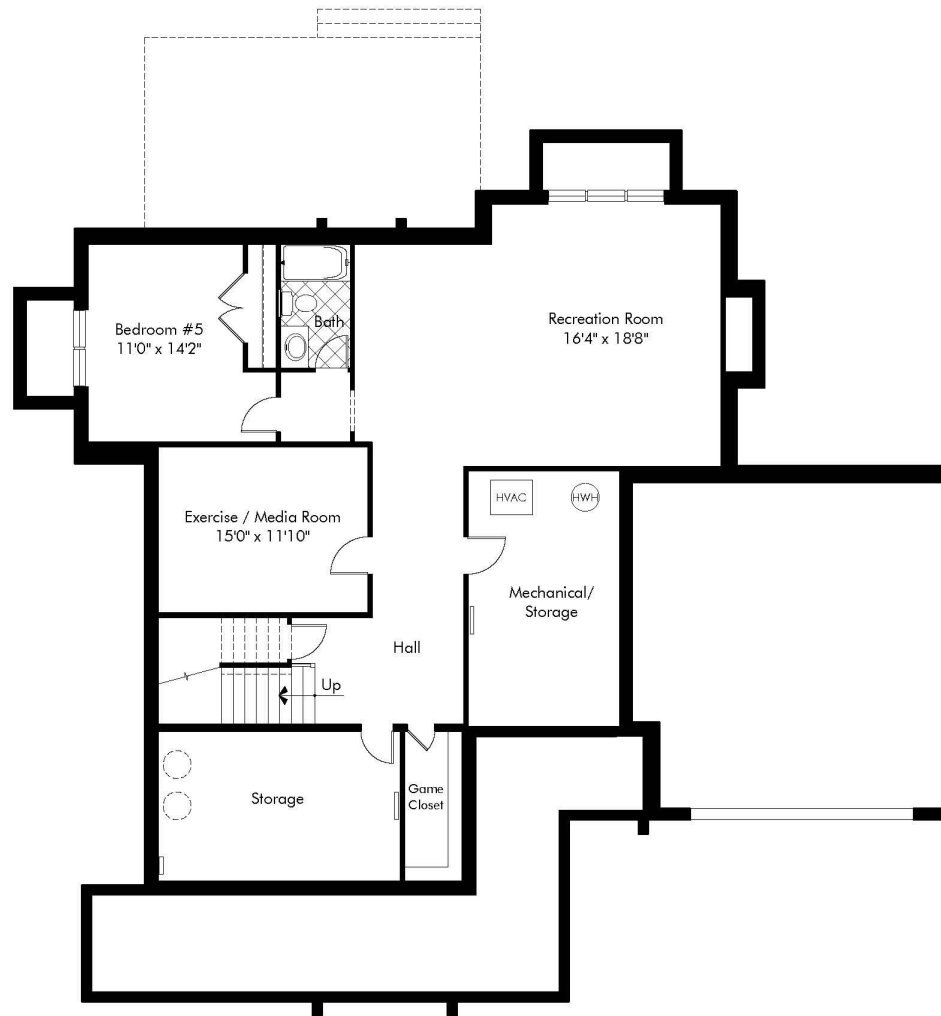


## Upper Level Plan

NOTE: Plan dimensions, features, materials and specifications are subject to change, or substitution without prior notice due to actual building conditions or ongoing design improvements.

## Upper Level Luxury Features Include...


- ◎ **Master Suite** – the luxurious, expansive master suite offers a tray ceiling, his-and-hers walk-in closets and a dressing vestibule
  - ◎ **Spa-Style Master Bath** – a sculptural freestanding soaking tub is matched by an oversized shower, dual vanities and wonderful natural marble and stone surfaces everywhere
  - ◎ **3 Additional Bedrooms and 2 Full Bathrooms**– space to accommodate every member of your family
  - ◎ **Bedroom-Level Laundry Area**– conveniently located and highly functional
  - ◎ **Loft Area** – a bonus room easily adaptable to a play space, TV watching or office use
- 

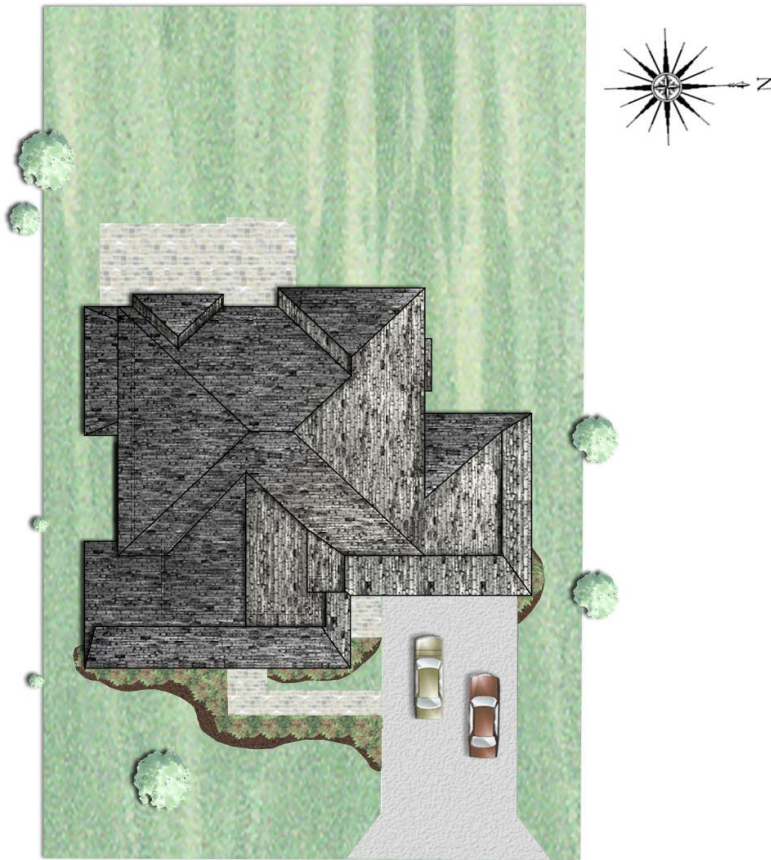


## Lower Level Plan

NOTE: Plan dimensions, features, materials and specifications are subject to change, or substitution without prior notice due to actual building conditions or ongoing design improvements.

## Lower Level Luxury Features Include...

- ◎ **Recreation Room** – the sprawling space with natural light from 3 full-size windows is ideal for game tables and a computer/play center
  - ◎ **Guest/Au Pair Suite** – with light from 2 full-size windows, a walk-in closet and a full bathroom
  - ◎ **Gym/Media Room** – use this space for your family's needs
  - ◎ **Game Closet and Storage Room** – a walk-in game closet and a large storage room complete the lower level
- 



## 10006 BROAD STREET

BETHESDA MARYLAND 20814

Lot Size 9,627 sq. ft.

Note: All plans are approximate, subject to change, and are the artist's conception only.

# MONTGOMERY COUNTY PUBLIC SCHOOL ASSIGNMENTS

- ◉ [Ashburton Elementary School](#)
- ◉ [North Bethesda Middle School](#)
- ◉ [Walter Johnson High School](#)

For verification of any school assignment, please call  
Montgomery County Public Schools at  
240-740-3000



[CLICK HERE TO VIEW LARGER MAP](#)



# MERIDIAN HOMES

*Concierge Level Service for Every Client*

**www.meridianhomesinc.com**

For more information  
contact us by calling  
301.652.4440  
or email

[info@meridianhomesinc.com](mailto:info@meridianhomesinc.com)

