



MERIDIAN HOMES

Concierge Level Service for Every Client

We Are Proud To Present:

**6404 East Halbert Road
Bethesda, Maryland 20817**





6404 East Halbert Road Bethesda, Maryland 20817

Modern farmhouse design with 5 bedrooms, 4.5 baths and 5,027 square-feet of living space

Coming Soon

Construction has begun and will be completed in Fall 2020. For a limited period of time, you can personalize some finishes in this home. [Contact Us](#) today for more details.

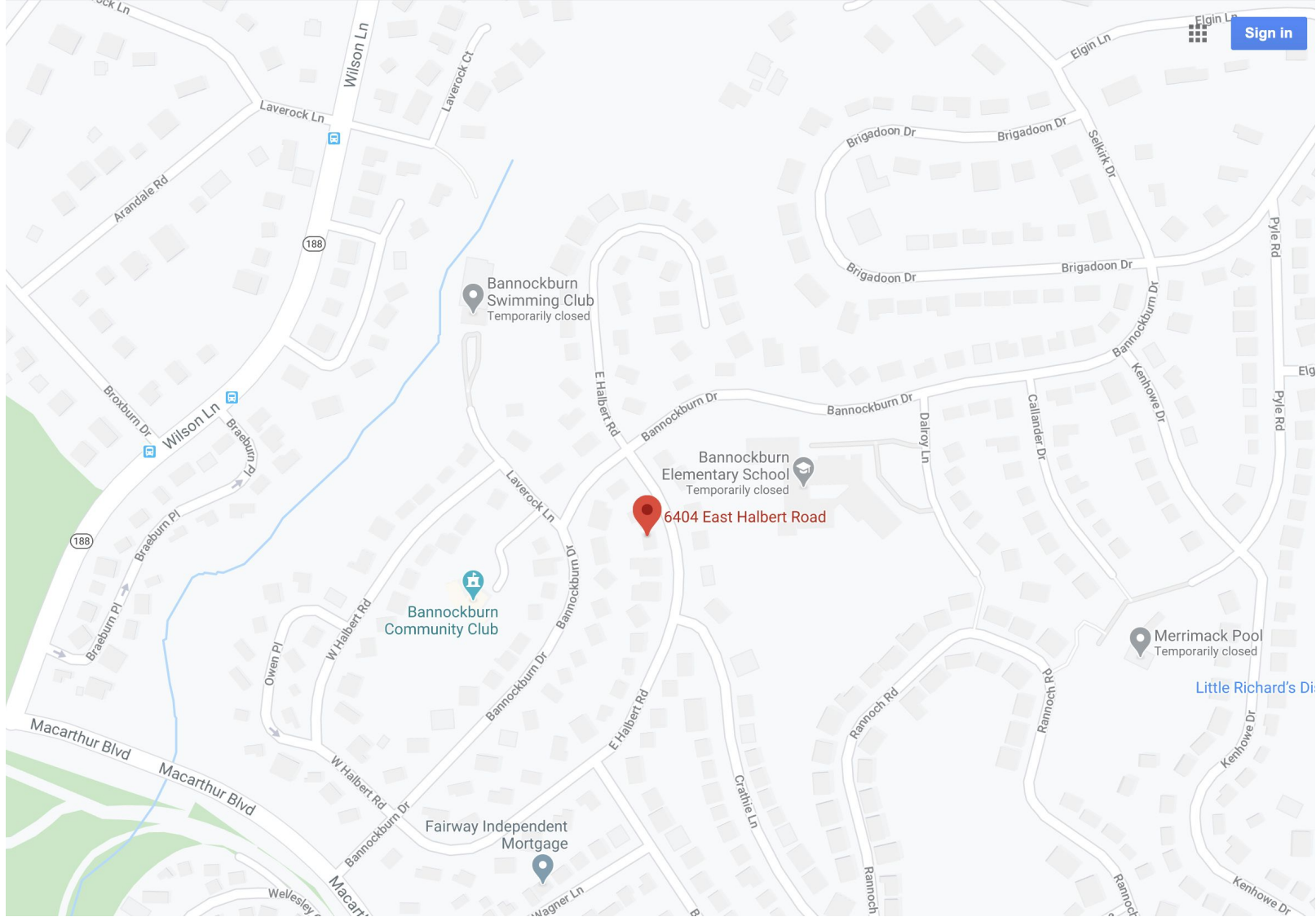
Architectural Detail

The gabled board and batten façade, front porch and other design touches perfectly capture the modern farmhouse aesthetic. Inside, the rooms have 9-foot ceilings and feature custom millwork, hardwood floors, and many other incredible details. With exceptional spaces on all three levels, this home is ideal for the varied activities that contemporary families enjoy.

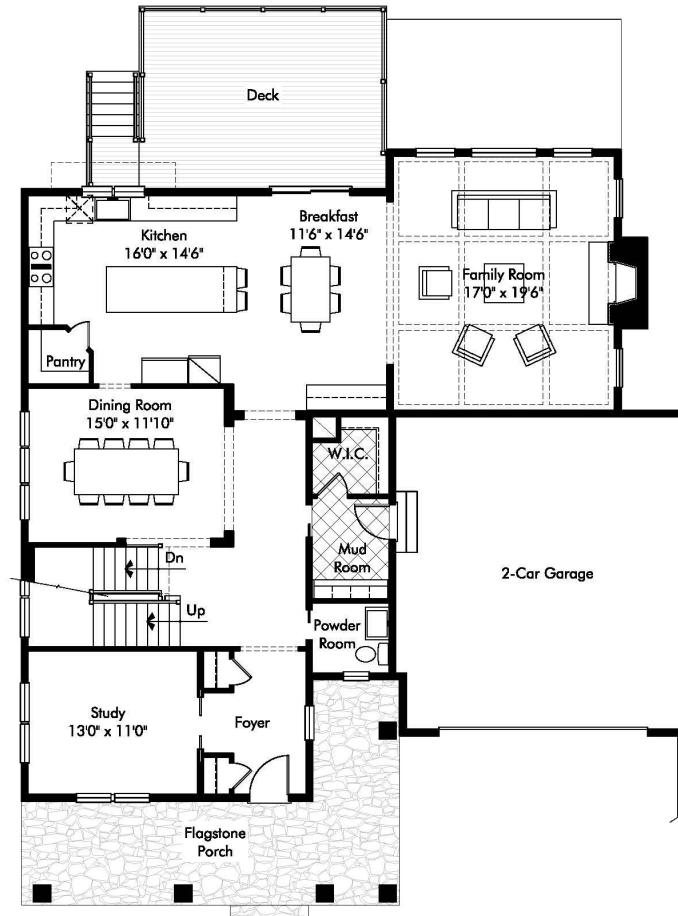
6404 East Halbert Road Bethesda, Maryland 20817

Location, Location, Location

6404 East Halbert Road is located in the sought-after Walt Whitman school district. The tree-lined, gently sloping lot is 7,813 square-feet. Downtown Bethesda, Beltway access and great schools are all nearby. For details about the location, click on the map on the next page.




[CLICK HERE TO VIEW LARGER MAP](#)




Main Level Plan

Note: Plans and specifications subject to change.

Main Level Luxury Features Include...

- ◎ **Gourmet Kitchen** – the open concept, sought-after layout has a center-island with seating and an adjacent breakfast area
 - custom quartz countertops
 - designer cabinetry with slow-close doors and drawers
 - professional grade KitchenAid stainless-steel appliances
 - apron front stainless-steel main sink with commercial-style faucet and integrated polished chrome soap dispenser
 - large walk-in pantry with built-in shelving and glass door
 - ◎ **Family Room** – this open-concept space has a coffered ceiling and a gas fireplace with stone facing and a flagstone hearth and mantle
 - ◎ **Dining Room** – the formal dining room features a wonderful chandelier and lots of natural light
 - ◎ **Living Room/Study** – this flexible space is designed to handle entertaining needs and the demands of everyday life
 - ◎ **Formal Foyer** – the gracious entryway features two coat closets
- 

Main Level Luxury Features (continued)...

- ◎ **Powder Room** – the formal powder room is discretely located off the formal foyer and features a furniture-style vanity, a contemporary faucet and a decorative mirror
 - ◎ **Family Foyer/Mudroom** – this high-traffic area of the home has access to the oversized two-car garage and the formal foyer, and includes;
 - a large walk-in closet
 - a bench
 - custom built-in lockers that provide plenty of storage
 - durable porcelain tile flooring
 - ◎ **Ceiling Height** – soaring 9-foot high ceilings grace the entire main level
 - ◎ **Flooring** – 3-1/4 " solid oak wide plank hardwood floors add elegance to the main level
 - ◎ **Oversized Two-Car Garage** – the garage can be easily accessed from the mudroom and has automatic door openers
- 




Upper Level Plan

Note: Plans and specifications subject to change.

Upper Level Luxury Features Include...

- ◎ **Master Suite** – the luxurious, expansive master suite offers a tray ceiling, his-and-hers walk-in closets, a dressing vestibule and 3-1/4" solid oak wide plank hardwood floors
- ◎ **Spa-Style Master Bath** – this luxurious retreat includes:
 - a sculptural freestanding soaking tub
 - an oversized shower with a built-in bench
 - dual recessed panel vanities
 - solid quartz countertops with decorative mirrors above
 - honed marble tile flooring
 - chrome lever faucets and fixtures
- ◎ **3 Additional Bedrooms** – there is space to accommodate every member of your family; bedrooms include upgraded carpet and closets with detailed built-in storage

Upper Level Luxury Features (continued)...

- ◎ **2 Full Bathrooms** – the spacious bathrooms include:
 - natural stone, glass and porcelain tile tub and shower surrounds
 - porcelain flooring
 - solid surface countertops with under-mount sink bowls
 - polished chrome plumbing fixtures
 - adult-height elongated toilets with slow-close seats
 - decorative mirrors
 - ◎ **Bedroom-Level Laundry Area** – conveniently located and highly functional, this laundry area has durable porcelain flooring and built-in cabinetry
 - ◎ **Loft Area** – a bonus room with hardwood floors is easily adaptable to a play space, TV watching or office use
 - ◎ **Ceiling Height** – soaring 9-foot high ceilings grace the entire upper level
- 



Lower Level Plan

Note: Plans and specifications subject to change.


Lower Level Luxury Features Include...

- ◎ **Recreation Room** – the sprawling space is ideal for game tables and a computer/play center and has walk-out access to a flagstone patio
- ◎ **Gym/Media Room** – use this flexible space for your family's needs
- ◎ **Game Closet and Storage Room** – a walk-in game closet and a large storage room will keep the lower level organized and neat
- ◎ **Guest/Au Pair Suite** – the bedroom has natural light from 2 full-size windows that offer exterior egress for safety; the bedroom also has a large closet
- ◎ **Full Bathroom** – the spacious bathroom includes:
 - porcelain tile tub surround
 - porcelain flooring
 - solid surface countertop with under-mount sink bowl
 - polished chrome plumbing fixtures
 - adult-height elongated toilet with slow-close seats
 - decorative mirror

Lower Level Luxury Features (continued)...

- ◎ **Ceiling Height** – impressive 8-foot 9" high ceilings grace the lower level
- ◎ **Flooring** – upgraded carpet is found throughout the living areas of the lower level

Luxury Features Throughout The Home Include...

- ◎ **Millwork, Trim and Doors** – oversized millwork including crown moulding, window and door casings and base trim is found throughout the home; all interior doors are two-panel with a solid core
 - ◎ **Lighting** – the generous lighting package includes recessed and decorative fixtures
 - ◎ **Home Automation** – the home is pre-wired for television and telephone and has multiple USB outlets
 - ◎ **Home Safety** – a fire suppression sprinkler system offers peace of mind
- 


Distinctive Exterior Features Include...

Architectural Style

- ◎ **Modern Farmhouse** – this much-adored architectural style has:
 - board and batten siding with decorative vent
 - stone veneer front to grade
 - stone veneer front stoop with flagstone pavers and stone risers
 - board and batten shutters
 - shingle and durable concrete lap siding
 - long lasting exterior trim
 - 30-year architectural grade roof shingles
 - tilt-out insulated windows with integral grills

Distinctive Exterior Features (continued)...

Other Exterior Features

- ◎ **Foundation** – the poured concrete foundation is durable and strong
 - ◎ **Front Porch** – the lovely farmhouse-style front porch is made of flagstone on concrete
 - ◎ **Rear Deck** – the rear deck offers a generously sized outdoor living area that's perfect for entertaining
 - ◎ **Lower Level Patio** – a flagstone patio can be accessed from the lower level recreation room
 - ◎ **Walkway and Driveway** – the walkway is made of flagstone on concrete, while the driveway is made of poured concrete with a brushed finish
 - ◎ **Exterior Lighting and Plumbing** – the home features front and rear electrical outlets and hose bibs as well as rear floodlights
 - ◎ **Landscaping** – a professional landscaping package offers the perfect finishing touch to this beautiful home
- 

Green/Eco-Friendly Features Include...

Energy Efficiency and Comfort Throughout

- ◎ **Windows** – EnergyStar low-E argon filled insulated windows
- ◎ **Doors** – energy efficient features include:
 - solid wood front doors with insulated glass
 - EnergyStar rated rear sliding door
 - insulated metal garage door
- ◎ **Lighting** – LED lighting and air-sealed recessed lighting housings
- ◎ **Hot Water Heater** – 75-gallon gas hot water heater
- ◎ **HVAC System** – EnergyStar high-efficiency 2-zone heating and central air conditioning; sealed air ducts
- ◎ **Walls** – green/eco-friendly features include:
 - continuous impervious whole-house wrap
 - energy efficient 2 x 6-foot exterior walls
 - moisture resistant drywall in all bathrooms and in the laundry room

Green/Eco-Friendly Features (continued)...

Energy Efficiency and Comfort Throughout

- ◎ **Insulation** – various types of insulation include:
 - R-49 blown-in fiberglass insulation in attic areas
 - R-20 insulation in exterior wood frame walls
 - R-11 insulation in unfinished basement areas against concrete walls
 - R-13 insulation in finished basement areas
 - R-30 insulation in all overhangs and garage ceilings under living areas
 - Nominal 1" R-6.5 closed cell foam insulation on garage ceiling and in bandboards
 - Foam insulation in window frames and any penetrations

Customer Service Coverage Includes...

Warranty and Inspections

- ◎ **Builder's Warranty** – at Meridian Homes, we stand behind our work
- ◎ **Pre-Settlement Inspection** – before you move in, our homes are quality-inspected
- ◎ **11-Month Inspection** – after you've lived in your home for a period of time, we return to make a final inspection

Prices and standard features subject to change without notice.





6404 EAST HALBERT ROAD

BETHESDA MARYLAND 20817

Lot Size 7,813 square feet

Note: Plans and specifications subject to change.

MONTGOMERY COUNTY PUBLIC SCHOOL ASSIGNMENTS

- ⊙ [Bannockburn Elementary School](#)
- ⊙ [Thomas W. Pyle Middle School](#)
- ⊙ [Walt Whitman High School](#)

*The school information above is not guaranteed as boundaries can change.

Please check with [MCPS](#) to confirm all school assignments.



MERIDIAN HOMES

Concierge Level Service for Every Client

www.meridianhomesinc.com

For more information
contact us by calling

301.652.4440

or email

info@meridianhomesinc.com

