



MERIDIAN HOMES

Concierge Level Service for Every Client

We Are Proud To Present:

**5704 Wyngate Drive
Bethesda, Maryland 20817**





5704 Wyngate Drive Bethesda, Maryland 20817

Modern farmhouse design with 5 bedrooms, 4.5 baths and 5,128 square-feet of living space

Coming Soon

Construction will begin in the Fall of 2021 and will be completed in the Spring of 2022. [Contact Us](#) today for more details.

Architectural Detail

The gabled façade, front porch and other design touches will perfectly capture the modern farmhouse esthetic. Inside, the rooms on the main and upper levels will have 9-foot ceilings and feature custom millwork, hardwood floors, and many other exceptional details. The well-designed, flowing three-level layout will accommodate a contemporary family's lifestyle.

5704 Wyngate Drive Bethesda, Maryland 20817

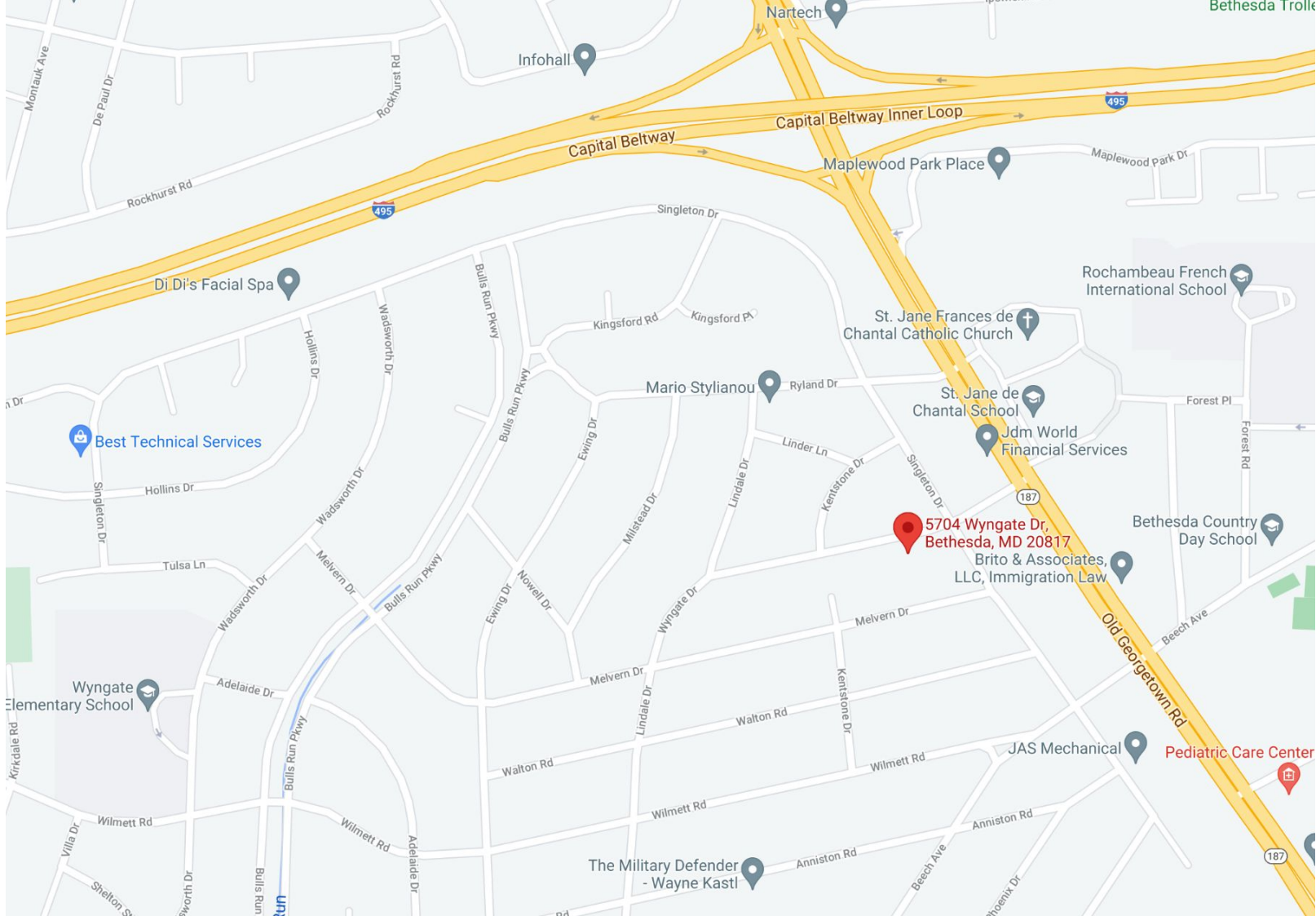
Location, Location, Location

This wonderful 6,900-square-foot lot is in the heart of Wyngate, one of Bethesda's most popular neighborhoods. This brand new home will be sited so that the main living spaces – gourmet kitchen, breakfast area and family room – as well as the flagstone patio and spacious backyard, bask in sunlight.

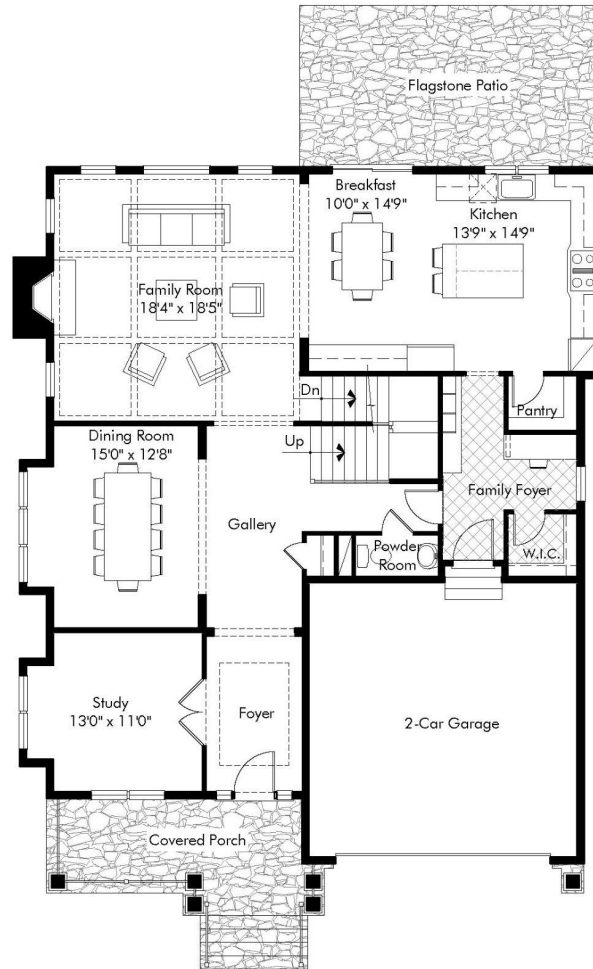
5704 Wyngate Drive is near Downtown Bethesda, Montgomery Mall and Wildwood Shopping Center.

For details about the location, click on the map on the next page.





[CLICK HERE TO VIEW LARGER MAP](#)




Main Level Plan

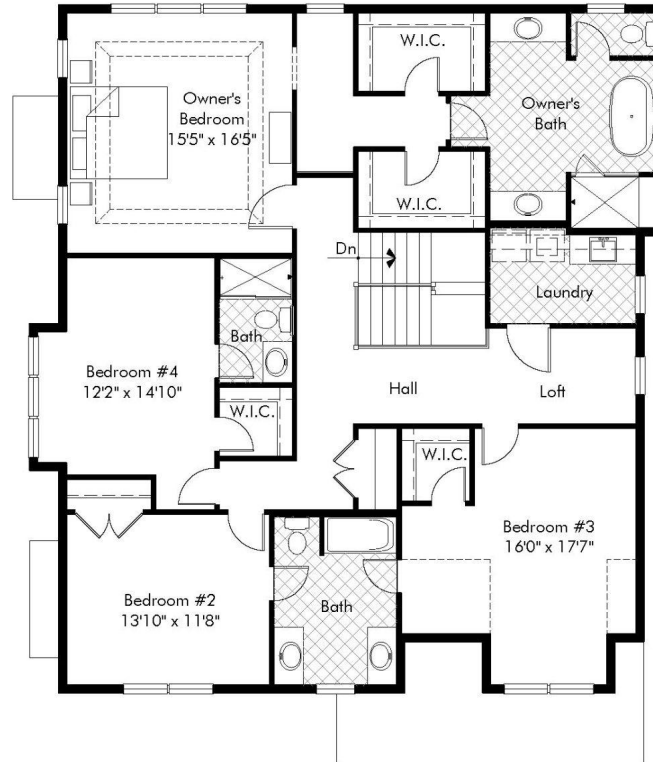
Note: Plans and specifications subject to change.

Main Level Luxury Features Include...

- ⦿ **Gourmet Kitchen** – the sought-after center-island layout with breakfast area features custom cabinetry with slow-close doors and drawers, quartz countertops, stainless-steel appliances, an apron front stainless-steel main sink with contemporary faucet and a walk-in pantry with a frosted glass door
 - ⦿ **Flagstone Patio** – lush landscaping will surround this outdoor retreat that's perfect for entertaining
 - ⦿ **Family Room** – free-flowing open-concept space with a coffered ceiling and a gas fireplace with stone facing, a flagstone hearth and a flagstone mantle
 - ⦿ **Dining Room** – this space for entertaining features custom wainscoting, a beautiful chandelier and tons of natural light
 - ⦿ **Study** – this flexible space can be the perfect home office
 - ⦿ **Main Level Gallery** – the high-traffic core of the home handles the flow with a family foyer/mudroom, powder room, large walk-in closet and a home-management center with desk
- 

Main Level Luxury Features (continued)...

- ⦿ **Ceiling Height** – soaring 9-foot high ceilings grace the entire main level
 - ⦿ **Flooring** – 3-1/4 " solid oak wide plank hardwood floors add elegance to the main level
 - ⦿ **Oversized Two-Car Garage** – the garage can be easily accessed from the mudroom and has automatic door openers
- 




Upper Level Plan

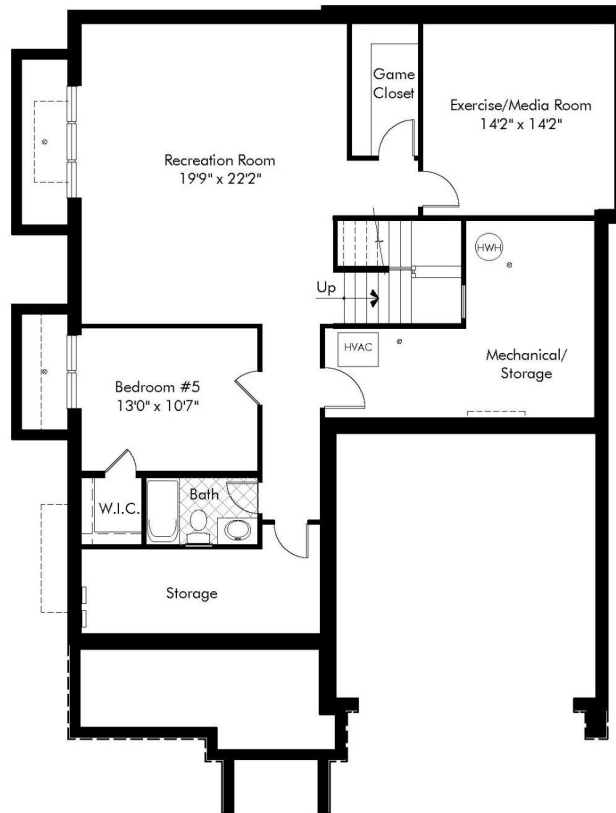
Note: Plans and specifications subject to change.

Upper Level Luxury Features Include...

- ◎ **Owner's Suite** – the luxurious, expansive owner's suite offers a tray ceiling, dual walk-in closets with built-ins, a dressing vestibule and 3-1/4" solid oak wide plank hardwood floors
- ◎ **Spa-Style Master Bath** – this luxurious retreat includes:
 - a sculptural freestanding soaking tub
 - an oversized shower with a built-in bench
 - dual recessed panel vanities
 - custom vanity mirrors extending to the ceiling
 - solid quartz countertops
 - honed marble tile flooring
 - chrome lever faucets and fixtures
- ◎ **3 Additional Bedrooms** – space to accommodate every member of your family with upgraded carpeting and closets with detailed built-in storage

Upper Level Luxury Features (continued)...

- ◎ **2 Additional Full Bathrooms** – the spacious bathrooms include:
 - natural stone and porcelain tile tub and shower surrounds
 - porcelain flooring
 - solid surface countertops with undermount sink bowls
 - polished chrome plumbing fixtures
 - adult-height elongated toilets with slow-close seats
 - custom decorative mirrors
 - ◎ **Upper-Level Laundry Area** – conveniently located and highly functional with porcelain flooring and cabinetry for storage
 - ◎ **Loft Area** – a bonus room easily adaptable to a play space, TV watching or office use
 - ◎ **Ceiling Height** – soaring 9-foot high ceilings grace the entire upper level
- 




Lower Level Plan

Note: Plans and specifications subject to change.


Lower Level Luxury Features Include...

- ◎ **Recreation Room** – sprawling space with natural light from 3 full-size windows, ideal for game tables and a computer/play center
- ◎ **Gym/Media Room** – use this flexible space for your family's needs
- ◎ **Game Closet and Storage Room** – a walk-in game closet and a large storage room will keep the lower level organized and neat
- ◎ **Guest/Au Pair Suite** – the bedroom has natural light from 2 full-size windows that offer egress for safety; the bedroom also has a large closet
- ◎ **Full Bathroom** – the spacious bathroom includes:
 - porcelain tile tub surround
 - porcelain flooring
 - solid surface countertop with undermount sink bowl
 - polished chrome plumbing fixtures
 - adult-height elongated toilet with slow-close seats
 - decorative mirror

Lower Level Luxury Features (continued)...

- ◎ **Ceiling Height** – impressive 8-foot 9" high ceilings grace the lower level
 - ◎ **Flooring** – upgraded carpet is found in the lower level bedroom; luxury vinyl plank flooring is found in the recreation room and gym/media room
- 

Luxury Features Throughout The Home Include...

- ◎ **Millwork, Trim and Doors** – oversized millwork including crown molding, window and door casings and base trim is found throughout the home; all interior doors are two-panel with a solid core
 - ◎ **Lighting** – the generous lighting package includes recessed and decorative fixtures
 - ◎ **Home Automation** – the home is pre-wired for television and telephone and has multiple USB outlets
 - ◎ **Home Safety** – a fire suppression sprinkler system offers peace of mind
- 


Distinctive Exterior Features Include...

Architectural Style

- ◎ **Modern Farmhouse** – this much-adored architectural style has:
 - board and batten concrete lap siding with decorative vent
 - board and batten shutters
 - stone veneer front to grade
 - stone veneer front stoop with flagstone pavers and stone risers
 - long lasting exterior trim
 - 30-year architectural grade roof shingles
 - tilt-out insulated windows with integral grills

Distinctive Exterior Features (continued)...

Other Exterior Features

- ◎ **Foundation** – the poured concrete foundation is durable and strong
 - ◎ **Front Porch** – the lovely farmhouse-style front porch is made of flagstone on concrete
 - ◎ **Rear Patio** – the rear flagstone-on-concrete patio offers a generously sized outdoor living area that's perfect for entertaining
 - ◎ **Walkway and Driveway** – the walkway and driveway are made of poured concrete with a brushed finish
 - ◎ **Exterior Lighting and Plumbing** – the home features front and rear electrical outlets and hose bibs as well as rear floodlights
 - ◎ **Landscaping** – a professional landscaping package offers the perfect finishing touch to this beautiful home
- 

Green/Eco-Friendly Features Include...

Energy Efficiency and Comfort Throughout

- ⊙ **Windows** – EnergyStar low-E argon filled insulated windows
- ⊙ **Doors** – energy efficient features include:
 - solid wood front door with insulated glass
 - EnergyStar rated rear sliding door
 - insulated metal garage door
- ⊙ **Lighting** – LED lighting and air-sealed recessed lighting housings
- ⊙ **Hot Water Heater** – 75-gallon gas hot water heater
- ⊙ **HVAC System** – EnergyStar high-efficiency 2-zone heating and central air conditioning; sealed air ducts
- ⊙ **Walls** – green/eco-friendly features include:
 - continuous impervious whole-house wrap
 - energy efficient 2 x 6-foot exterior walls
 - moisture resistant drywall in all bathrooms and in the laundry room

Green/Eco-Friendly Features (continued)...

Energy Efficiency and Comfort Throughout

- ◎ **Insulation** – various types of insulation include:
 - R-49 blown-in fiberglass insulation in attic areas
 - R-20 insulation in exterior wood frame walls
 - R-11 insulation in unfinished basement areas against concrete walls
 - R-13 insulation in finished basement areas
 - R-30 insulation in all overhangs and garage ceilings under living areas
 - Nominal 1" R-6.5 closed cell foam insulation on garage ceiling and in bandboards prior to fiberglass insulation
 - Foam insulation in window frames and any penetrations

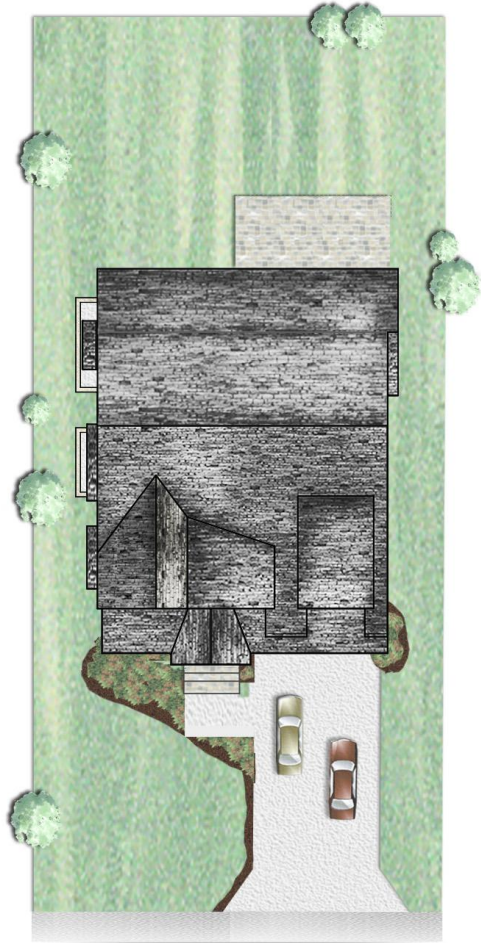
Customer Service Coverage Includes...

Warranty and Inspections

- ◎ **Builder's Warranty** – at Meridian Homes, we stand behind our work
- ◎ **Pre-Settlement Inspection** – before you move in, our homes are quality-inspected
- ◎ **11-Month Inspection** – after you've lived in your home for a period of time, we return to make a final inspection

Prices and standard features subject to change without notice.





5704 WYNGATE DRIVE

BETHESDA MARYLAND 20817

Lot Size 6,900 sq. ft.

Note: All plans are approximate, subject to change, and are the artist's conception only.

MONTGOMERY COUNTY PUBLIC SCHOOL ASSIGNMENTS

- ⊙ [Wyingate Elementary School](#)
- ⊙ [North Bethesda Middle School](#)
- ⊙ [Walter Johnson High School](#)

*The school information above is not guaranteed as boundaries can change.

Please check with [MCPS](#) to confirm all school assignments.



MERIDIAN HOMES

Concierge Level Service for Every Client

www.meridianhomesinc.com

For more information
contact us by calling

301.652.4440

or email

info@meridianhomesinc.com

