



MERIDIAN HOMES

Concierge Level Service for Every Client

We Are Proud To Present:

**6405 Wilmett Road
Bethesda, Maryland 20817**





6405 Wilmett Road Bethesda, Maryland 20817

Modern farmhouse design with 5 bedrooms, 4.5 baths and 5,669 square-feet of interior space

Coming Soon

Construction began in late 2021 and will be completed in the summer of 2022. [Contact Us](#) today for more details.

Architectural Detail

The gabled façade, front porch and other design touches will perfectly capture the modern farmhouse esthetic. Inside, the rooms on the main and upper levels will have 9-foot ceilings and feature custom millwork, hardwood floors, and many other exceptional details. The well-designed, flowing three-level layout will accommodate a contemporary family's lifestyle.

6405 Wilmett Road Bethesda, Maryland 20817

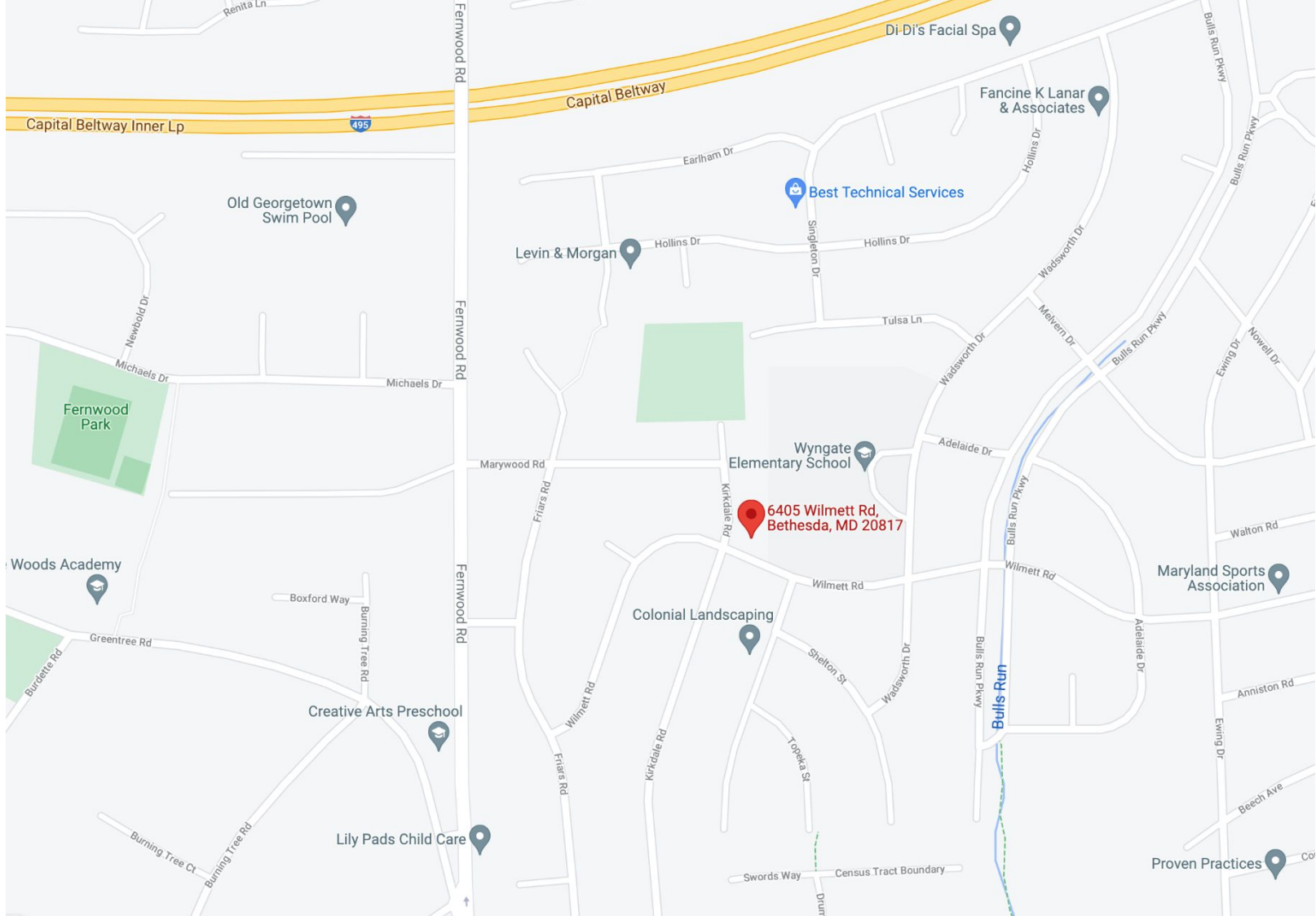
Location, Location, Location

This wonderful 9,167-square-foot lot is in the heart of Wyngate, one of Bethesda's most popular neighborhoods. This brand new home will be sited so that the main living spaces – gourmet kitchen, breakfast area and family room – as well as the flagstone patio and spacious backyard, bask in sunlight.

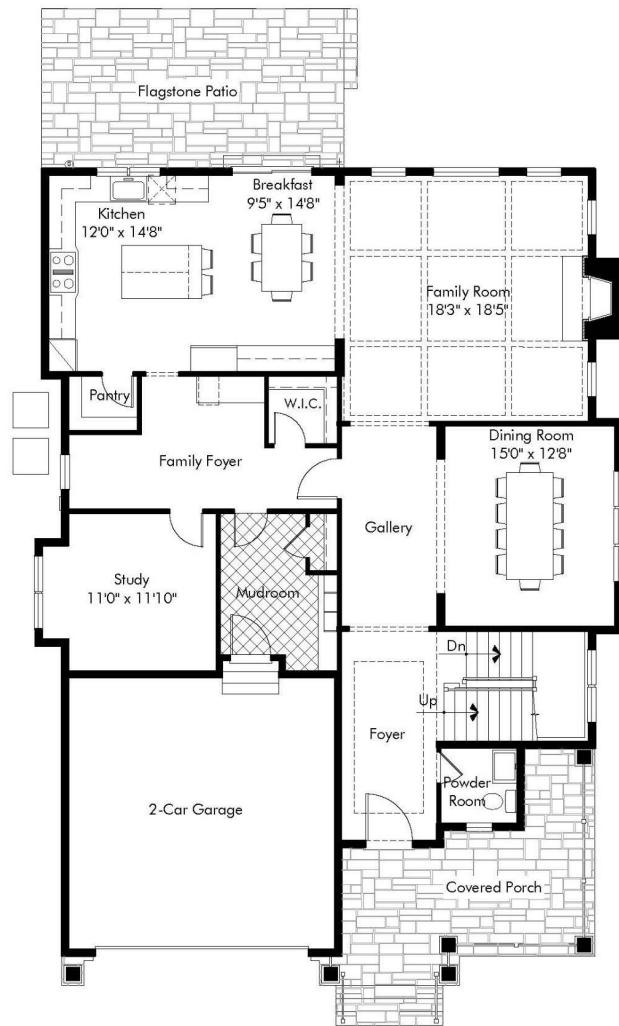
6405 Wilmett Road is near Downtown Bethesda, Montgomery Mall and Wildwood Shopping Center.

For details about the location, click on the map on the next page.






[CLICK HERE TO VIEW LARGER MAP](#)




Main Level Plan

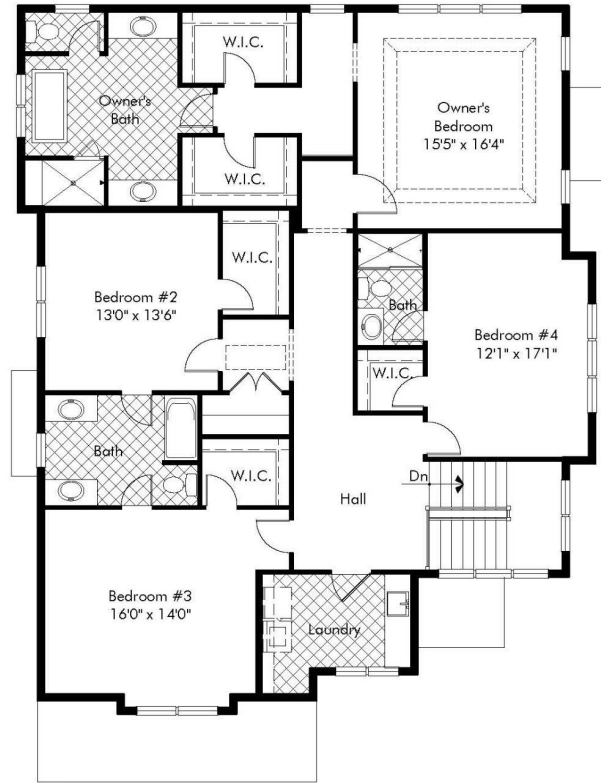
Note: Plans and specifications subject to change.

Main Level Luxury Features Include...

- ◎ **Gourmet Kitchen** – the sought-after layout has a center-island with seating, a breakfast area, custom cabinetry with slow-close doors and drawers, quartz countertops, professional grade stainless-steel appliances, an apron front stainless-steel main sink with professional style pull-down faucet, and a walk-in pantry with a frosted glass door
 - ◎ **Flagstone Patio** – this outdoor retreat is the perfect place for entertaining
 - ◎ **Family Room** – free-flowing open-concept space with a coffered ceiling and a gas fireplace with stone facing, a flagstone hearth and a flagstone mantle
 - ◎ **Dining Room** – this space for entertaining features custom wainscoting, a beautiful chandelier, and tons of natural light
 - ◎ **Study** – this flexible space, which is tucked out of the way, can be the perfect home office
 - ◎ **Family Foyer** – this convenient space has a serving pantry with a built-in beverage center, and an oversized walk-in closet
- 

Main Level Luxury Features (continued)...

- ◎ **Mudroom** – with entry from the garage, this room is highly functional and beautiful with built in cabinetry and porcelain flooring
 - ◎ **Ceiling Height** – soaring 9-foot high ceilings grace the entire main level
 - ◎ **Flooring** – 3-1/4 " solid oak wide-plank hardwood floors add elegance to the main level
 - ◎ **Oversized Two-Car Garage** – the garage has automatic door openers, a dedicated circuit and plug that will accommodate an electric vehicle charger, and can be easily accessed from the mudroom
 - ◎ **Wrap-Around Front Porch** – the spacious, covered porch has enough room for furniture, and features flagstone flooring and low-maintenance rails
- 



Upper Level Plan

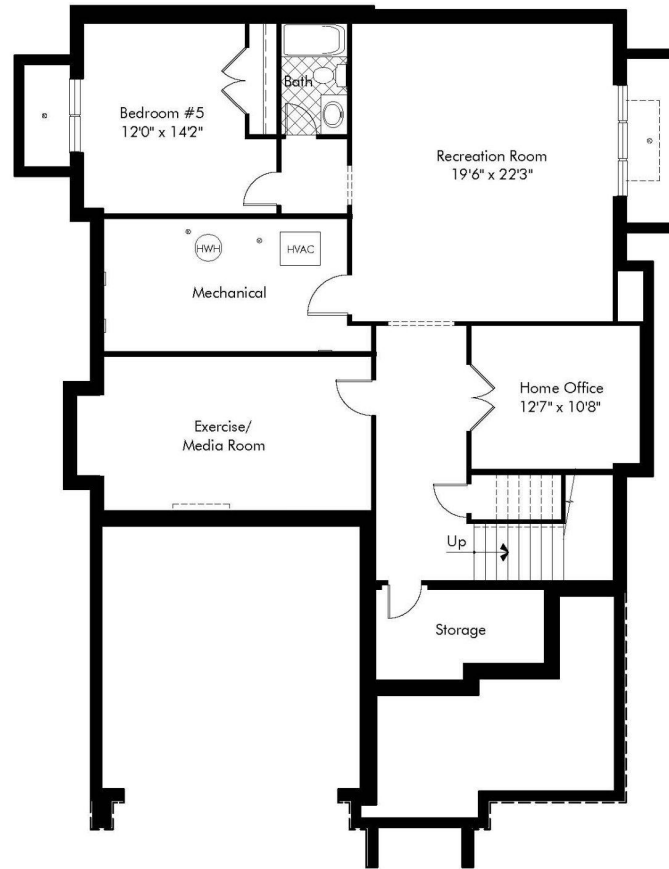
Note: Plans and specifications subject to change.

Upper Level Luxury Features Include...

- ◎ **Primary Suite** – the luxurious, expansive primary suite offers a tray ceiling, dual walk-in closets with built-ins, a dressing vestibule and 3-1/4" solid oak wide plank hardwood floors
- ◎ **Spa-Style Primary Bath** – this luxurious retreat includes:
 - a freestanding soaking tub
 - an oversized shower with a built-in bench
 - dual recessed panel vanities
 - lighted vanity mirrors
 - quartz countertops with undermount sink bowls
 - polished chrome lever faucets and fixtures
 - adult-height elongated toilet with slow-close seat
 - porcelain tile flooring

Upper Level Luxury Features (continued)...


- ◎ **3 Additional Bedrooms** – space to accommodate every member of your family with upgraded carpeting and closets with detailed built-in storage
- ◎ **2 Additional Full Bathrooms** – the spacious bathrooms include:
 - porcelain tile tub and shower surrounds
 - custom decorative mirrors
 - quartz and quartzite countertops with undermount sink bowls
 - polished chrome faucets and fixtures
 - adult-height elongated toilets with slow-close seats
 - porcelain flooring
- ◎ **Upper-Level Laundry Area** – spacious, conveniently located, and highly functional with porcelain flooring and cabinetry for storage
- ◎ **Ceiling Height** – soaring 9-foot high ceilings grace the entire upper level



Lower Level Plan

Note: Plans and specifications subject to change.


Lower Level Luxury Features Include...

- ⦿ **Recreation Room** – sprawling space with natural light from 3 full-size windows that offer egress for safety; ideal room for game tables and a computer/play center
 - ⦿ **Exercise/Media Room** – use this flexible space for your family's needs
 - ⦿ **Home Office** – a second office makes this home ideal for a family needing multiple home office options
 - ⦿ **Guest/Au Pair Suite** – the bedroom has natural light from 2 full-size windows that offer egress for safety; the bedroom also has a large walk-in closet
- 

Lower Level Luxury Features (continued)...

- ◎ **Full Bathroom** – the spacious bathroom includes:
 - porcelain tile tub surround
 - quartz countertop with undermount sink bowl
 - decorative mirror
 - polished chrome faucets and fixtures
 - adult-height elongated toilet with slow-close seats
 - porcelain flooring
- ◎ **Ceiling Height** – impressive 8-foot 9” high ceilings grace the lower level
- ◎ **Flooring** – luxury vinyl plank flooring is found in the recreation room; upgraded carpet is found in the lower level bedroom and in the exercise/media room and home office

Luxury Features Throughout The Home Include...

- ◎ **Millwork, Trim, and Doors** – oversized millwork including crown molding, window and door casings and base trim is found throughout the home; all interior doors are two-panel with a solid core
 - ◎ **Lighting** – the generous lighting package includes recessed and decorative fixtures
 - ◎ **Home Automation** – the home is pre-wired for television and has multiple USB outlets
 - ◎ **Home Safety** – a fire suppression sprinkler system offers peace of mind
- 


Distinctive Exterior Features Include...

Architectural Style

- ◎ **Modern Farmhouse** – this much-adored architectural style has:
 - board and batten and concrete lap siding with decorative vents
 - stone veneer front to grade
 - stone veneer front stoop with flagstone pavers and stone risers
 - long lasting exterior trim
 - 30-year architectural grade roof shingles
 - insulated windows with integral grills

Distinctive Exterior Features (continued)...

Other Exterior Features

- ⦿ **Foundation** – the poured concrete foundation is durable and strong
 - ⦿ **Wrap-Around Front Porch** – the lovely farmhouse-style wrap-around front porch is made of flagstone
 - ⦿ **Rear Patio** – the rear flagstone patio offers a generously sized outdoor living area that's perfect for entertaining
 - ⦿ **Walkway and Driveway** – the walkway is made of flagstone, and the driveway is made of poured concrete with a brushed finish
 - ⦿ **Exterior Lighting and Plumbing** – the home features front and rear electrical outlets and hose bibs as well as rear floodlights
 - ⦿ **Landscaping** – a professional landscaping package offers the perfect finishing touch to this beautiful home
- 

Green/Eco-Friendly Features Include...

Energy Efficiency and Comfort Throughout

- ⊙ **Windows** – EnergyStar low-E argon filled insulated windows
- ⊙ **Doors** – energy-efficient features include:
 - solid wood front door with insulated glass
 - EnergyStar-rated rear sliding door
 - insulated metal garage door
- ⊙ **Lighting** – LED lighting and air-sealed recessed lighting housings
- ⊙ **Hot Water Heater** – 75-gallon gas hot water heater
- ⊙ **HVAC System** – EnergyStar high-efficiency 2-zone heating and central air conditioning; sealed air ducts
- ⊙ **Walls** – green/eco-friendly features include:
 - continuous impervious whole-house wrap
 - energy efficient 2 x 6-foot exterior walls
 - moisture-resistant drywall in all bathrooms and in the laundry room

Green/Eco-Friendly Features (continued)...

Energy Efficiency and Comfort Throughout

- ◎ **Insulation** – various types of insulation include:
 - R-49 blown-in fiberglass insulation in attic areas
 - R-20 insulation in exterior wood frame walls
 - R-11 insulation in unfinished basement areas against concrete walls
 - R-13 insulation in finished basement areas
 - R-30 insulation in all overhangs and garage ceilings under living areas
 - Nominal 1” R-6.5 closed cell foam insulation on garage ceiling and in bandboards prior to fiberglass insulation
 - Foam insulation in window frames and any penetrations

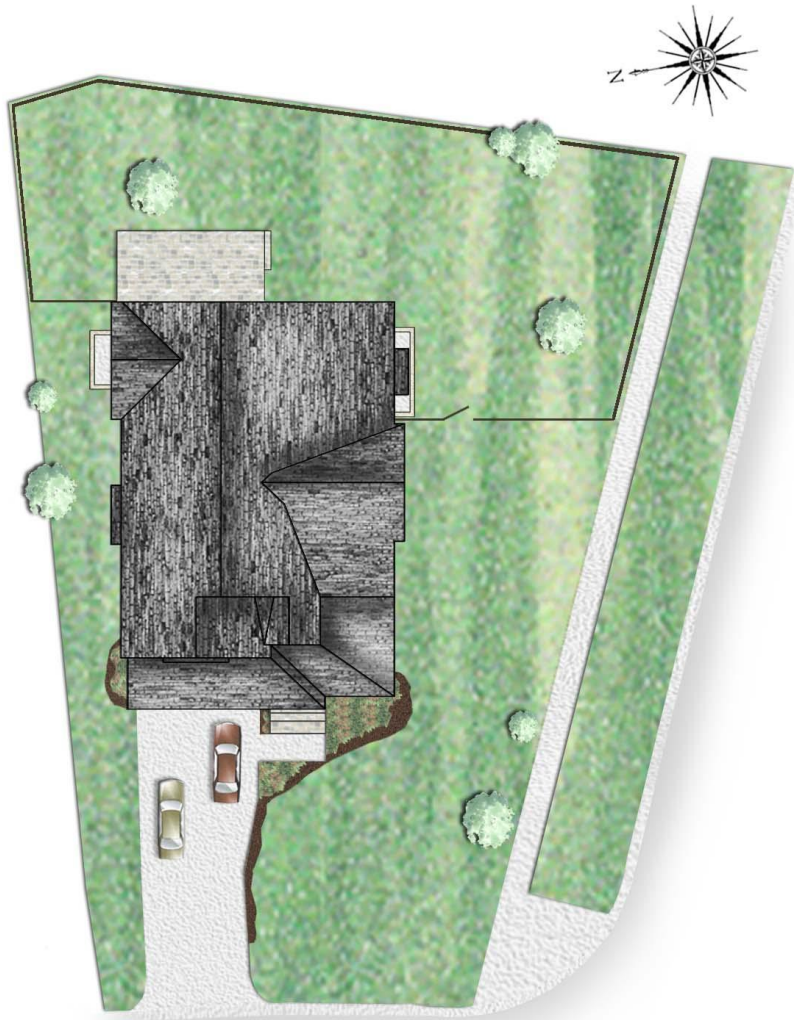
Customer Service Coverage Includes...

Warranty and Inspections

- ⦿ **Builder's Warranty** – at Meridian Homes, we stand behind our work
- ⦿ **Pre-Settlement Inspection** – before you move in, our homes are quality-inspected
- ⦿ **11-Month Inspection** – after you've lived in your home for a period of time, we return to make a final inspection

Prices and standard features subject to change without notice.





6405 WILMETT ROAD

BETHESDA MARYLAND 20817

Lot Size 9.167 sq. ft.

Note: All plans are approximate, subject to change, and are the artist's conception only.

MONTGOMERY COUNTY PUBLIC SCHOOL ASSIGNMENTS

- ◎ [Wyngate Elementary School](#)
- ◎ [North Bethesda Middle School](#)
- ◎ [Walter Johnson High School](#)

*The school information above is not guaranteed as boundaries can change.

Please check with [MCPS](#) to confirm all school assignments.



MERIDIAN HOMES

Concierge Level Service for Every Client

www.meridianhomesinc.com

For more information
contact us by calling

301.652.4440

or email

info@meridianhomesinc.com

